
Summary

Production Name	SgK269 Rabbit Polyclonal Antibody
Description	Rabbit Polyclonal Antibody
Host	Rabbit
Application	WB
Reactivity	Human,Rat,Mouse

Performance

Conjugation	Unconjugated
Modification	Unmodified
Isotype	IgG
Clonality	Polyclonal
Form	Liquid
Storage	Store at 4°C short term. Aliquot and store at -20°C long term. Avoid freeze/thaw cycles.
Buffer	Liquid in PBS containing 50% glycerol, 0.5% BSA and 0.02% New type preservative N.
Purification	Affinity purification

Immunogen

Gene Name	PEAK1
Alternative Names	PEAK1; KIAA2002; Pseudopodium-enriched atypical kinase 1; Sugen kinase 269; Tyrosine-protein kinase SgK269
Gene ID	79834.0
SwissProt ID	Q9H792.The antiserum was produced against synthesized peptide derived from human SGK269. AA range:111-160

Application

Dilution Ratio	WB 1:500-2000
Molecular Weight	195kD

Product Name: SgK269 Rabbit Polyclonal Antibody
Catalog #: APRab17821

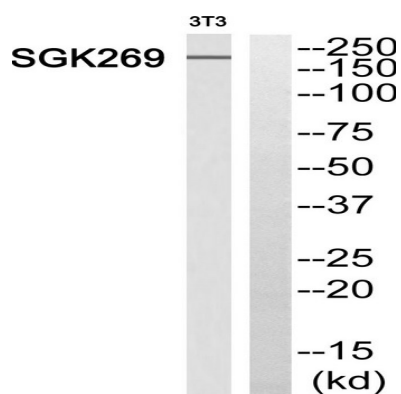


Background

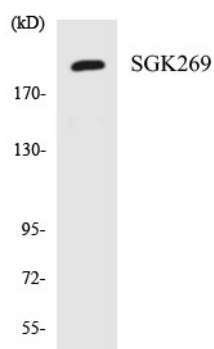
This gene encodes a non-receptor tyrosine kinase that is a member of the new kinase family three (NFK3) family. In migrating cells, the encoded protein is associated with the actin cytoskeleton and focal adhesions and promotes developing focal adhesion elongation. This protein may play a role in the regulation of cell migration, proliferation and cancer metastasis. [provided by RefSeq, Mar 2014],catalytic activity:ATP + a [protein]-L-tyrosine = ADP + a [protein]-L-tyrosine phosphate.,similarity:Belongs to the protein kinase superfamily.,similarity:Contains 1 protein kinase domain.,

Research Area

Image Data



Western blot analysis of SGK269 Antibody. The lane on the right is blocked with the SGK269 peptide.



Western blot analysis of the lysates from 293 cells using SGK269 antibody.

Note

For research use only.