

---

## Summary

<b>Production Name</b>	Sg III Rabbit Polyclonal Antibody
<b>Description</b>	Rabbit Polyclonal Antibody
<b>Host</b>	Rabbit
<b>Application</b>	WB,IHC,
<b>Reactivity</b>	Human,Rat

## Performance

<b>Conjugation</b>	Unconjugated
<b>Modification</b>	Unmodified
<b>Isotype</b>	IgG
<b>Clonality</b>	Polyclonal
<b>Form</b>	Liquid
<b>Storage</b>	Store at 4°C short term. Aliquot and store at -20°C long term. Avoid freeze/thaw cycles.
<b>Buffer</b>	Liquid in PBS containing 50% glycerol, 0.5% BSA and 0.02% New type preservative N.
<b>Purification</b>	Affinity purification

## Immunogen

<b>Gene Name</b>	SCG3
<b>Alternative Names</b>	SCG3; Secretogranin-3; Secretogranin III; SgIII
<b>Gene ID</b>	29106.0
<b>SwissProt ID</b>	Q8WXD2.The antiserum was produced against synthesized peptide derived from the N-terminal region of human SCG3. AA range:21-70

## Application

<b>Dilution Ratio</b>	WB 1:500 - 1:2000 IHC 1:100 - 1:300. IF 1:200 - 1:1000. ELISA: 1:20000..
<b>Molecular Weight</b>	53kD

## Background

---

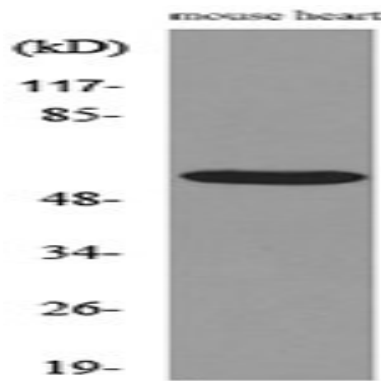
**Product Name: Sg III Rabbit Polyclonal Antibody**  
**Catalog #: APRab17807**



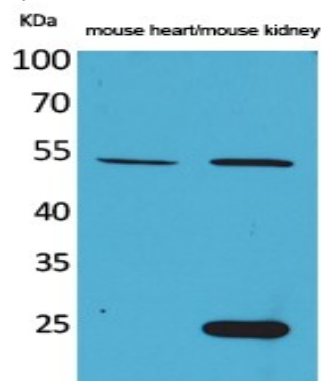
secretogranin III(SCG3) Homo sapiens The protein encoded by this gene is a member of the chromogranin/secretogranin family of neuroendocrine secretory proteins. Granins may serve as precursors for biologically active peptides. Some granins have been shown to function as helper proteins in sorting and proteolytic processing of prohormones; however, the function of this protein is unknown. Two transcript variants encoding different isoforms have been found for this gene. [provided by RefSeq, Sep 2009],subcellular location:Neuroendocrine and endocrine secretory granules.,tissue specificity:Expressed in brain, heart, kidney, liver and skeletal muscle.,

## Research Area

## Image Data

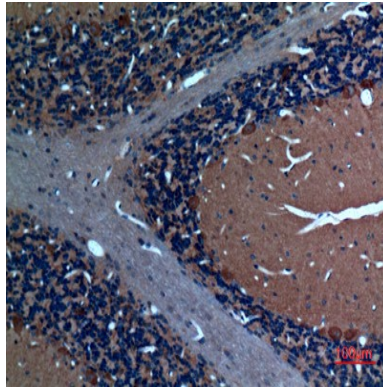


Western blot analysis of lysate from mouse heart cells, using SCG3 Antibody.

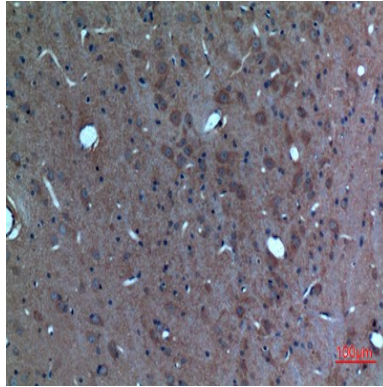


Western Blot analysis of mouse heart, mouse kidney cells using Sg III Polyclonal Antibody.. Secondary antibody was diluted at 1:20000

**Product Name: Sg III Rabbit Polyclonal Antibody**  
**Catalog #: APRab17807**



Immunohistochemical analysis of paraffin-embedded rat-brain, antibody was diluted at 1:100



Immunohistochemical analysis of paraffin-embedded rat-brain, antibody was diluted at 1:100

**Note**

For research use only.