
Summary

Production Name	SFRS15 Rabbit Polyclonal Antibody
Description	Rabbit Polyclonal Antibody
Host	Rabbit
Application	WB,ELISA
Reactivity	Human,Mouse,Rat

Performance

Conjugation	Unconjugated
Modification	Unmodified
Isotype	IgG
Clonality	Polyclonal
Form	Liquid
Storage	Store at 4°C short term. Aliquot and store at -20°C long term. Avoid freeze/thaw cycles.
Buffer	Liquid in PBS containing 50% glycerol, 0.5% BSA and 0.02% New type preservative N.
Purification	Affinity purification

Immunogen

Gene Name	SCAF4
Alternative Names	SCAF4; KIAA1172; SFRS15; Splicing factor; arginine/serine-rich 15; CTD-binding SR-like protein RA4; SR-related and CTD-associated factor 4
Gene ID	57466.0
SwissProt ID	O95104.The antiserum was produced against synthesized peptide derived from human SFRS15. AA range:601-650

Application

Dilution Ratio	WB 1:500 - 1:2000. ELISA: 1:40000
Molecular Weight	140kD

Product Name: SFRS15 Rabbit Polyclonal Antibody
Catalog #: APRab17799

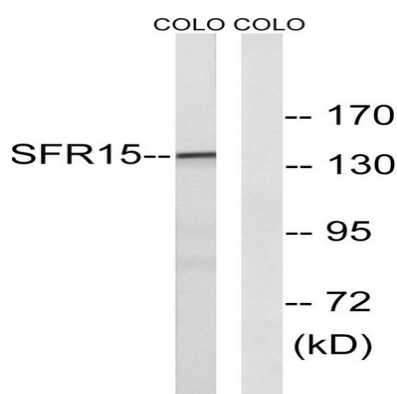


Background

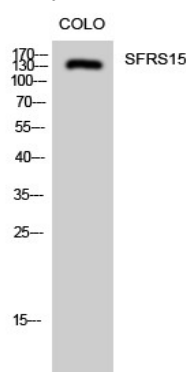
This gene likely encodes a member of the arginine/serine-rich splicing factor family. A similar protein in Rat appears to bind the large subunit of RNA polymerase II and provide a link between transcription and pre-mRNA splicing. Alternatively spliced transcript variants have been described. [provided by RefSeq, Feb 2009],function:May act to physically and functionally link transcription and pre-mRNA processing.,similarity:Belongs to the splicing factor SR family.,similarity:Contains 1 CID domain.,similarity:Contains 1 RRM (RNA recognition motif) domain.,subunit:Interacts with the repetitive C-terminal domain (CTD) of RNA polymerase II.,

Research Area

Image Data



Western blot analysis of lysates from COLO cells, using SFRS15 Antibody. The lane on the right is blocked with the synthesized peptide.



Western Blot analysis of COLO cells using SFRS15 Polyclonal Antibody diluted at 1: 2000 cells nucleus extracted by Minute TM Cytoplasmic and Nuclear Fractionation kit (SC-003, Inventbiotech, MN, USA) .

Note

For research use only.

Product Name: SFRS15 Rabbit Polyclonal Antibody
Catalog #: APRab17799

