

Summary

Production Name	SFRS11 Rabbit Polyclonal Antibody
Description	Rabbit Polyclonal Antibody
Host	Rabbit
Application	WB
Reactivity	Human,Mouse

Performance

Conjugation	Unconjugated
Modification	Unmodified
Isotype	IgG
Clonality	Polyclonal
Form	Liquid
Storage	Store at 4°C short term. Aliquot and store at -20°C long term. Avoid freeze/thaw cycles.
Buffer	Liquid in PBS containing 50% glycerol, 0.5% BSA and 0.02% New type preservative N.
Purification	Affinity purification

Immunogen

Gene Name	SRSF11
Alternative Names	SRSF11; SFRS11; Serine/arginine-rich splicing factor 11; Arginine-rich 54 kDa nuclear protein; p54; Splicing factor; arginine/serine-rich 11
Gene ID	9295.0
SwissProt ID	Q05519.The antiserum was produced against synthesized peptide derived from human SFRS11. AA range:211-260

Application

Dilution Ratio	WB 1:500-2000;ELISA 2000-20000
Molecular Weight	54kD

Background

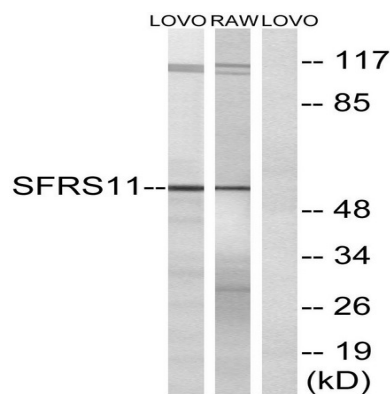
Product Name: SFRS11 Rabbit Polyclonal Antibody
Catalog #: APRab17797



This gene encodes 54-kD nuclear protein that contains an arginine/serine-rich region similar to segments found in pre-mRNA splicing factors. Although the function of this protein is not yet known, structure and immunolocalization data suggest that it may play a role in pre-mRNA processing. Alternative splicing results in multiple transcript variants encoding different proteins. In addition, a pseudogene of this gene has been found on chromosome 12.[provided by RefSeq, Sep 2010],function:May function in pre-mRNA splicing.,similarity:Belongs to the splicing factor SR family.,similarity:Contains 1 RRM (RNA recognition motif) domain.,subcellular location:Colocalizes with spliceosome components.,subunit:Interacts with PUF60.,

Research Area

Image Data



Western blot analysis of lysates from LOVO and RAW264.7 cells, using SFRS11 Antibody. The lane on the right is blocked with the synthesized peptide.

Note

For research use only.