
Summary

Production Name	Serpin B12 Rabbit Polyclonal Antibody
Description	Rabbit Polyclonal Antibody
Host	Rabbit
Application	WB,
Reactivity	Human,Rat,Mouse

Performance

Conjugation	Unconjugated
Modification	Unmodified
Isotype	IgG
Clonality	Polyclonal
Form	Liquid
Storage	Store at 4°C short term. Aliquot and store at -20°C long term. Avoid freeze/thaw cycles.
Buffer	Liquid in PBS containing 50% glycerol, 0.5% BSA and 0.02% New type preservative N.
Purification	Affinity purification

Immunogen

Gene Name	SERPINB12
Alternative Names	SERPINB12; Serpin B12
Gene ID	89777.0
SwissProt ID	Q96P63.The antiserum was produced against synthesized peptide derived from human SERPINB12. AA range:241-290

Application

Dilution Ratio	WB 1:500-2000
Molecular Weight	47kD

Background

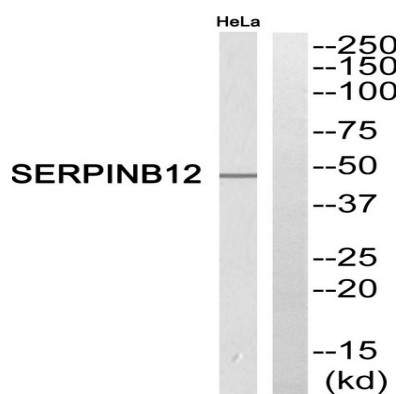
Product Name: Serpin B12 Rabbit Polyclonal Antibody
Catalog #: APRab17764



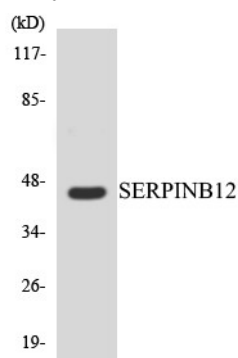
function:Inhibits trypsin and plasmin, but not thrombin, coagulation factor Xa, or urokinase-type plasminogen activator.,similarity:Belongs to the serpin family.,similarity:Belongs to the serpin family. Ov-serpin subfamily.,tissue specificity:Expressed in many tissues, including brain, bone marrow, lymph node, heart, lung, liver, pancreas, testis, ovary, and intestine.,function:Inhibits trypsin and plasmin, but not thrombin, coagulation factor Xa, or urokinase-type plasminogen activator.,similarity:Belongs to the serpin family.,similarity:Belongs to the serpin family. Ov-serpin subfamily.,tissue specificity:Expressed in many tissues, including brain, bone marrow, lymph node, heart, lung, liver, pancreas, testis, ovary, and intestine.,

Research Area

Image Data

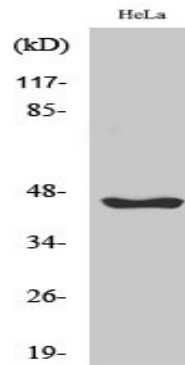


Western blot analysis of SERPINB12 Antibody. The lane on the right is blocked with the SERPINB12 peptide.



Western blot analysis of the lysates from HeLa cells using SERPINB12 antibody.

Product Name: Serpin B12 Rabbit Polyclonal Antibody
Catalog #: APRab17764



Western Blot analysis of various cells using Serpin B12 Polyclonal Antibody

Note

For research use only.