

Product Name: Serpin A11 Rabbit Polyclonal Antibody
Catalog #: APRab17763



Summary

Production Name	Serpin A11 Rabbit Polyclonal Antibody
Description	Rabbit Polyclonal Antibody
Host	Rabbit
Application	WB
Reactivity	Human,Rat,Mouse

Performance

Conjugation	Unconjugated
Modification	Unmodified
Isotype	IgG
Clonality	Polyclonal
Form	Liquid
Storage	Store at 4°C short term. Aliquot and store at -20°C long term. Avoid freeze/thaw cycles.
Buffer	Liquid in PBS containing 50% glycerol, 0.5% BSA and 0.02% New type preservative N.
Purification	Affinity purification

Immunogen

Gene Name	SERPINA11
Alternative Names	SERPINA11; Serpin A11
Gene ID	256394.0
SwissProt ID	Q86U17.The antiserum was produced against synthesized peptide derived from human SERPINA11. AA range:191-240

Application

Dilution Ratio	WB 1: 500-2000
Molecular Weight	47kD

Background

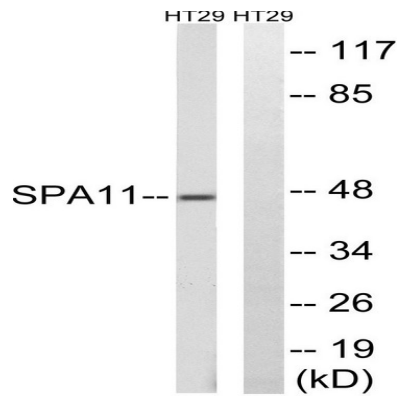
similarity:Belongs to the serpin family.,similarity:Belongs to the serpin family.,

Product Name: Serpin A11 Rabbit Polyclonal Antibody
Catalog #: APRab17763



Research Area

Image Data



Western blot analysis of lysates from HT-29 cells, using SERPINA11 Antibody. The lane on the right is blocked with the synthesized peptide.

Note

For research use only.