

---

## Summary

<b>Production Name</b>	Septin 7 Rabbit Polyclonal Antibody
<b>Description</b>	Rabbit Polyclonal Antibody
<b>Host</b>	Rabbit
<b>Application</b>	WB,ELISA
<b>Reactivity</b>	Human,Mouse,Rat

## Performance

<b>Conjugation</b>	Unconjugated
<b>Modification</b>	Unmodified
<b>Isotype</b>	IgG
<b>Clonality</b>	Polyclonal
<b>Form</b>	Liquid
<b>Storage</b>	Store at 4°C short term. Aliquot and store at -20°C long term. Avoid freeze/thaw cycles.
<b>Buffer</b>	Liquid in PBS containing 50% glycerol, 0.5% BSA and 0.02% New type preservative N.
<b>Purification</b>	Affinity purification

## Immunogen

<b>Gene Name</b>	SEPT7
<b>Alternative Names</b>	SEPT7; CDC10; Septin-7; CDC10 protein homolog
<b>Gene ID</b>	989.0
<b>SwissProt ID</b>	Q16181.The antiserum was produced against synthesized peptide derived from human SEPT7. AA range:350-399

## Application

<b>Dilution Ratio</b>	WB 1:500 - 1:2000. ELISA: 1:20000..
<b>Molecular Weight</b>	48kD

## Background

---

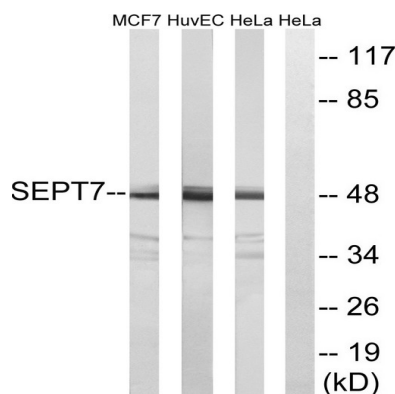
**Product Name: Septin 7 Rabbit Polyclonal Antibody**  
**Catalog #: APRab17744**



septin 7(SEPT7) Homo sapiens This gene encodes a protein that is highly similar to the CDC10 protein of *Saccharomyces cerevisiae*. The protein also shares similarity with Diff 6 of *Drosophila* and with H5 of mouse. Each of these similar proteins, including the yeast CDC10, contains a GTP-binding motif. The yeast CDC10 protein is a structural component of the 10 nm filament which lies inside the cytoplasmic membrane and is essential for cytokinesis. This human protein functions in gliomagenesis and in the suppression of glioma cell growth, and it is required for the association of centromere-associated protein E with the kinetochore. Alternative splicing results in multiple transcript variants. Several related pseudogenes have been identified on chromosomes 5, 7, 9, 10, 11, 14, 17 and 19. [provided by RefSeq, Jul 2011],function:Required for normal progress through mitosis. Involved in cytokinesis. Required for normal association of CENPE with the kinetochore.,similarity:Belongs to the septin family.,subcellular location:Distributed throughout the cytoplasm in prometaphase cells. Associated with the spindle during metaphase. Associated with the central spindle and at the cleavage furrow in anaphase cells. Detected at the midbody in telophase.,subunit:Heterohexamer composed of two heterotrimers containing one copy each of SEPT2, SEPT6 and SEPT7. The asymmetrical heterotrimers associate head-to-head to form a hexameric unit that assembles into filaments. Interacts directly with CENPE and links CENPE to septin filaments composed of SEPT2, SEPT6 and SEPT7.,

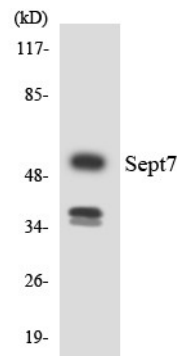
## Research Area

## Image Data

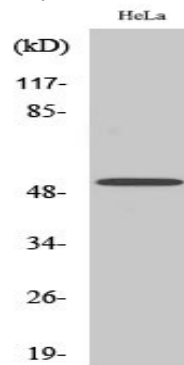


Western blot analysis of lysates from HeLa, HUVEC, and MCF-7 cells, using SEPT7 Antibody. The lane on the right is blocked with the synthesized peptide.

**Product Name: Septin 7 Rabbit Polyclonal Antibody**  
**Catalog #: APRab17744**



Western blot analysis of the lysates from HUVEC cells using SEPT7 antibody.



Western Blot analysis of various cells using Septin 7 Polyclonal Antibody

**Note**

For research use only.