
Summary

Production Name	Septin 14 Rabbit Polyclonal Antibody
Description	Rabbit Polyclonal Antibody
Host	Rabbit
Application	WB,
Reactivity	Human,Rat,Mouse

Performance

Conjugation	Unconjugated
Modification	Unmodified
Isotype	IgG
Clonality	Polyclonal
Form	Liquid
Storage	Store at 4°C short term. Aliquot and store at -20°C long term. Avoid freeze/thaw cycles.
Buffer	Liquid in PBS containing 50% glycerol, 0.5% BSA and 0.02% New type preservative N.
Purification	Affinity purification

Immunogen

Gene Name	SEPT14
Alternative Names	SEPT14; Septin-14
Gene ID	346288.0
SwissProt ID	Q6ZU15.The antiserum was produced against synthesized peptide derived from human SEPT14. AA range:341-390

Application

Dilution Ratio	WB 1:500-2000
Molecular Weight	50kD

Background

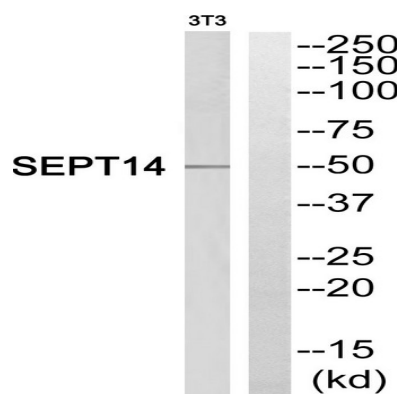
Product Name: Septin 14 Rabbit Polyclonal Antibody
Catalog #: APRab17739



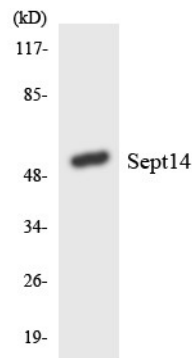
SEPT14 is a member of the highly conserved septin family of GTP-binding cytoskeletal proteins implicated in membrane transport, apoptosis, cell polarity, cell cycle regulation, cytokinesis, and other cellular functions (Peterson et al., 2007 [PubMed 17922164]).[supplied by OMIM, Jul 2008],function:Involved in cytokinesis .,similarity:Belongs to the septin family.,

Research Area

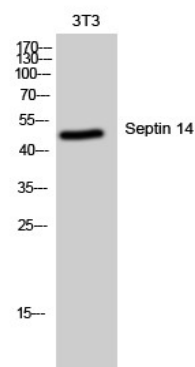
Image Data



Western blot analysis of SEPT14 Antibody. The lane on the right is blocked with the SEPT14 peptide.



Western blot analysis of the lysates from Jurkat cells using SEPT14 antibody.



Western Blot analysis of 3T3 cells using Septin 14 Polyclonal Antibody

Product Name: Septin 14 Rabbit Polyclonal Antibody
Catalog #: APRab17739



Note

For research use only.