
Summary

Production Name	Septin 1 Rabbit Polyclonal Antibody
Description	Rabbit Polyclonal Antibody
Host	Rabbit
Application	WB,ELISA
Reactivity	Human,Mouse,Rat

Performance

Conjugation	Unconjugated
Modification	Unmodified
Isotype	IgG
Clonality	Polyclonal
Form	Liquid
Storage	Store at 4°C short term. Aliquot and store at -20°C long term. Avoid freeze/thaw cycles.
Buffer	Liquid in PBS containing 50% glycerol, 0.5% BSA and 0.02% New type preservative N.
Purification	Affinity purification

Immunogen

Gene Name	SEPT1
Alternative Names	SEPT1; DIFF6; PNUTL3; Septin-1; LARP; Peanut-like protein 3; Serologically defined breast cancer antigen NY-BR-24
Gene ID	1731.0
SwissProt ID	Q8WYJ6.The antiserum was produced against synthesized peptide derived from human SEPT1. AA range:181-230

Application

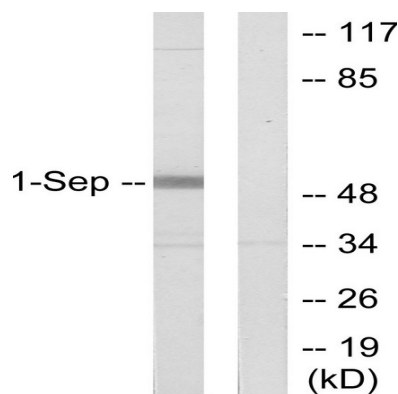
Dilution Ratio	WB 1:500 - 1:2000. ELISA: 1:20000
Molecular Weight	41kD

Background

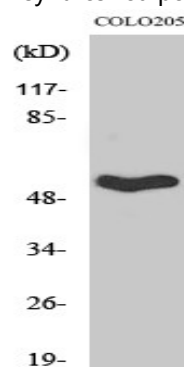
septin 1 (SEPT1) Homo sapiens This gene is a member of the septin family of GTPases. Members of this family are required for cytokinesis and the maintenance of cellular morphology. This gene encodes a protein that can form homo- and heterooligomeric filaments, and may contribute to the formation of neurofibrillary tangles in Alzheimer's disease. Alternatively spliced transcript variants have been found but the full-length nature of these variants has not been determined. [provided by RefSeq, Dec 2012],function:Involved in cytokinesis .,similarity:Belongs to the septin family.,subunit:May assemble into a multicomponent structure.,

Research Area

Image Data



Western blot analysis of lysates from Jurkat cells, using SEPT1 Antibody. The lane on the right is blocked with the synthesized peptide.



Western Blot analysis of various cells using Septin 1 Polyclonal Antibody

Note

For research use only.