

Summary

Production Name	SENP8 Rabbit Polyclonal Antibody
Description	Rabbit Polyclonal Antibody
Host	Rabbit
Application	IHC, WB, ELISA
Reactivity	Human, Mouse, Rat

Performance

Conjugation	Unconjugated
Modification	Unmodified
Isotype	IgG
Clonality	Polyclonal
Form	Liquid
Storage	Store at 4°C short term. Aliquot and store at -20°C long term. Avoid freeze/thaw cycles.
Buffer	Liquid in PBS containing 50% glycerol, 0.5% BSA and 0.02% New type preservative N.
Purification	Affinity purification

Immunogen

Gene Name	SENP8 SENP8; DEN1; NEDP1; PRSC2; FKSG8; Sentrin-specific protease 8; Deneddylase-1;
Alternative Names	NEDD8-specific protease 1; Protease; cysteine 2; Sentrin/SUMO-specific protease SENP8
Gene ID	123228.0
SwissProt ID	Q96LD8. The antiserum was produced against synthesized peptide derived from human SENP8. AA range:161-210

Application

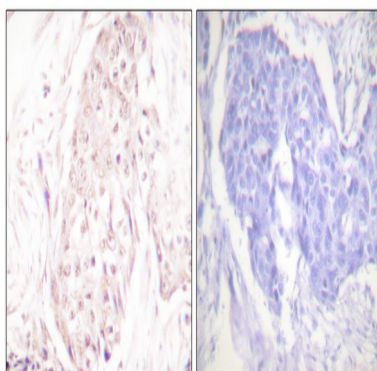
Dilution Ratio	WB 1:500 - 1:2000. IHC 1:100 - 1:300. ELISA: 1:10000..
Molecular Weight	27kD

Background

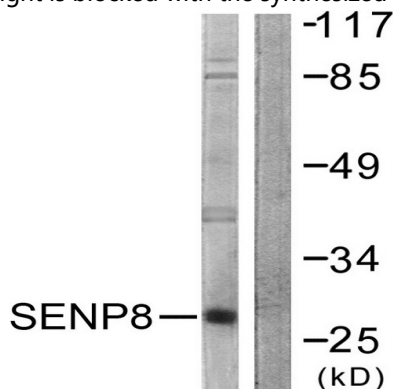
This gene encodes a cysteine protease that is a member of the sentrin-specific protease family. The encoded protein is involved in processing and deconjugation of the ubiquitin-like protein termed, neural precursor cell expressed developmentally downregulated 8. Alternate splicing results in multiple transcript variants.[provided by RefSeq, Oct 2009],function:Protease that catalyzes two essential functions in the NEDD8 pathway: processing of full-length NEDD8 to its mature form and deconjugation of NEDD8 from targeted proteins such as cullins or p53.,similarity:Belongs to the peptidase C48 family.,tissue specificity:Broadly expressed, with highest levels in kidney and pancreas.,

Research Area

Image Data

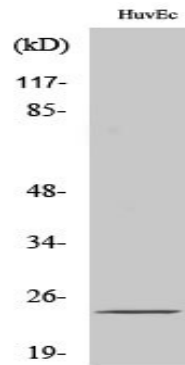


Immunohistochemistry analysis of paraffin-embedded human breast carcinoma tissue, using SENP8 Antibody. The picture on the right is blocked with the synthesized peptide.



Western blot analysis of lysates from HUVEC cells, using SENP8 Antibody. The lane on the right is blocked with the synthesized peptide.

Product Name: SENP8 Rabbit Polyclonal Antibody
Catalog #: APRab17731



Western Blot analysis of various cells using SENP8 Polyclonal Antibody

Note

For research use only.