

Product Name: SENP6 Rabbit Polyclonal Antibody
Catalog #: APRab17729



Summary

Production Name	SENP6 Rabbit Polyclonal Antibody
Description	Rabbit Polyclonal Antibody
Host	Rabbit
Application	IHC,ELISA
Reactivity	Human,Rat,Mouse

Performance

Conjugation	Unconjugated
Modification	Unmodified
Isotype	IgG
Clonality	Polyclonal
Form	Liquid
Storage	Store at 4°C short term. Aliquot and store at -20°C long term. Avoid freeze/thaw cycles.
Buffer	Liquid in PBS containing 50% glycerol, 0.5% BSA and 0.02% New type preservative N.
Purification	Affinity purification

Immunogen

Gene Name	SENP6
Alternative Names	SENP6; KIAA0797; SSP1; SUSP1; FKSG6; Sentrin-specific protease 6; SUMO-1-specific protease 1; Sentrin/SUMO-specific protease SENP6
Gene ID	26054.0
SwissProt ID	Q9GZR1.The antiserum was produced against synthesized peptide derived from human SENP6. AA range:1042-1091

Application

Dilution Ratio	IHC 1:100-1:300 ELISA: 1:10000
Molecular Weight	

Background

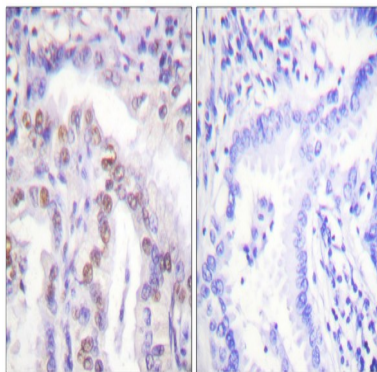
Product Name: SENP6 Rabbit Polyclonal Antibody
Catalog #: APRab17729



Ubiquitin-like molecules (UBLs), such as SUMO1 (UBL1; MIM 601912), are structurally related to ubiquitin (MIM 191339) and can be ligated to target proteins in a similar manner as ubiquitin. However, covalent attachment of UBLs does not result in degradation of the modified proteins. SUMO1 modification is implicated in the targeting of RANGAP1 (MIM 602362) to the nuclear pore complex, as well as in stabilization of I-kappa-B-alpha (NFKBIA; MIM 164008) from degradation by the 26S proteasome. Like ubiquitin, UBLs are synthesized as precursor proteins, with 1 or more amino acids following the C-terminal glycine-glycine residues of the mature UBL protein. Thus, the tail sequences of the UBL precursors need to be removed by UBL-specific proteases, such as SENP6, prior to their conjugation to target proteins (Kim et al., 2000 [PubMed 10799485]). SENPs also display isopeptidase activity for function: Protease that deconjugates SUMO1, SUMO2 and SUMO3 from targeted proteins. Does not seem to be involved in the processing of full-length SUMO proteins to their mature forms. Deconjugates SUMO1 from RXRA, leading to transcriptional activation. May act preferentially on substrates containing 3 or more SUMO2 or SUMO3 moieties., similarity: Belongs to the peptidase C48 family., subunit: Interacts with RXRA., tissue specificity: Highly expressed in reproductive organs, such as testis, ovary and prostate.,

Research Area

Image Data



Immunohistochemistry analysis of paraffin-embedded human lung carcinoma, using SENP6 Antibody. The picture on the right is blocked with the synthesized peptide.

Note

For research use only.