

Summary

Production Name	SENP2 Rabbit Polyclonal Antibody
Description	Rabbit Polyclonal Antibody
Host	Rabbit
Application	WB,ELISA
Reactivity	Human,Mouse,Rat

Performance

Conjugation	Unconjugated
Modification	Unmodified
Isotype	IgG
Clonality	Polyclonal
Form	Liquid
Storage	Store at 4°C short term. Aliquot and store at -20°C long term. Avoid freeze/thaw cycles.
Buffer	Liquid in PBS containing 50% glycerol, 0.5% BSA and 0.02% New type preservative N.
Purification	Affinity purification

Immunogen

Gene Name	SENP2
Alternative Names	SENP2; KIAA1331; Sentrin-specific protease 2; Axam2; SMT3-specific isopeptidase 2; Smt3ip2; Sentrin/SUMO-specific protease SENP2
Gene ID	59343.0
SwissProt ID	Q9HC62.The antiserum was produced against synthesized peptide derived from human SENP2. AA range:481-530

Application

Dilution Ratio	WB 1:500 - 1:2000. ELISA: 1:20000
Molecular Weight	68kD

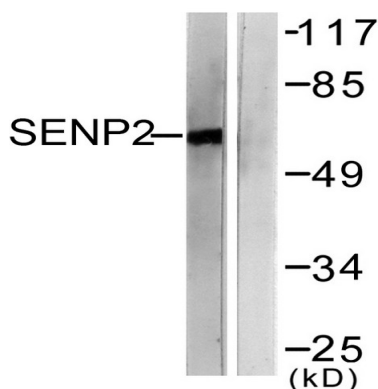
Background

SUMO1 (UBL1; MIM 601912) is a small ubiquitin-like protein that can be covalently conjugated to other proteins. SENP2 is one of a group of enzymes that process newly synthesized SUMO1 into the conjugatable form and catalyze the deconjugation of SUMO1-containing species.[supplied by OMIM, Apr 2004],domain:The N-terminus is necessary and sufficient for nuclear envelope targeting.,function:Protease that catalyzes two essential functions in the SUMO pathway: processing of full-length SUMO1, SUMO2 and SUMO3 to their mature forms and deconjugation of SUMO1, SUMO2 and SUMO3 from targeted proteins. May down-regulate CTNNB1 levels and thereby modulate the Wnt pathway.,PTM:Polyubiquitinated; which leads to proteasomal degradation.,similarity:Belongs to the peptidase C48 family.,subcellular location:Shuttles between cytoplasm and nucleus.,subunit:Binds to SUMO2 and SUMO3 (By similarity). Interacts with the C-terminal domain of NUP153 via its N-terminus.,

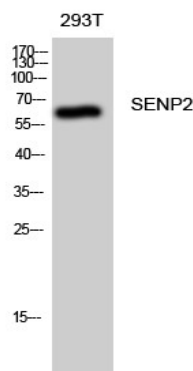
Research Area

WNT;WNT-T CELL

Image Data



Western blot analysis of lysates from MDA-MB-435 cells, using SENP2 Antibody. The lane on the right is blocked with the synthesized peptide.



Western Blot analysis of 293T cells using SENP2 Polyclonal Antibody diluted at 1: 1000

Product Name: SENP2 Rabbit Polyclonal Antibody
Catalog #: APRab17725



Note

For research use only.