

## Summary

<b>Production Name</b>	SEMA3C Rabbit Polyclonal Antibody
<b>Description</b>	Rabbit Polyclonal Antibody
<b>Host</b>	Rabbit
<b>Application</b>	IHC,ELISA
<b>Reactivity</b>	Human,Mouse,Rat

## Performance

<b>Conjugation</b>	Unconjugated
<b>Modification</b>	Unmodified
<b>Isotype</b>	IgG
<b>Clonality</b>	Polyclonal
<b>Form</b>	Liquid
<b>Storage</b>	Store at 4°C short term. Aliquot and store at -20°C long term. Avoid freeze/thaw cycles.
<b>Buffer</b>	Liquid in PBS containing 50% glycerol, 0.5% BSA and 0.02% New type preservative N.
<b>Purification</b>	Affinity purification

## Immunogen

<b>Gene Name</b>	SEMA3C
<b>Alternative Names</b>	SEMA3C; SEMAE; Semaphorin-3C; Semaphorin-E; Sema E
<b>Gene ID</b>	10512.0
<b>SwissProt ID</b>	Q99985.The antiserum was produced against synthesized peptide derived from human SEMA3C. AA range:701-750

## Application

<b>Dilution Ratio</b>	IHC 1:100-1:300 ELISA: 1:40000
<b>Molecular Weight</b>	

## Background

function:May be involved in diverse cell survival mechanisms.,similarity:Belongs to the semaphorin

**Product Name: SEMA3C Rabbit Polyclonal Antibody**  
**Catalog #: APRab17715**



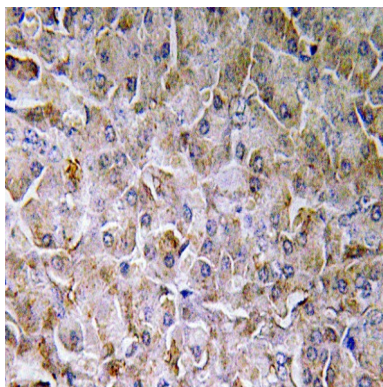
---

family.,similarity:Contains 1 Ig-like C2-type (immunoglobulin-like) domain.,similarity:Contains 1 PSI domain.,similarity:Contains 1 Sema domain.,tissue specificity:Expressed intensely in the heart, skeletal muscle, colon, small intestine, ovary, testis, and prostate. Faint expression ubiquitously among other organs, including brain.,function:May be involved in diverse cell survival mechanisms.,similarity:Belongs to the semaphorin family.,similarity:Contains 1 Ig-like C2-type (immunoglobulin-like) domain.,similarity:Contains 1 PSI domain.,similarity:Contains 1 Sema domain.,tissue specificity:Expressed intensely in the heart, skeletal muscle, colon, small intestine, ovary, testis, and prostate. Faint expression ubiquitously among other organs, including brain.,

## Research Area

Axon guidance;

## Image Data



Immunohistochemistry analysis of SEMA3C antibody in paraffin-embedded human pancreas tissue.

## Note

For research use only.