

Product Name: Secretin Receptor Rabbit Polyclonal Antibody
Catalog #: APRab17699

Summary

| | |
|------------------------|--|
| Production Name | Secretin Receptor Rabbit Polyclonal Antibody |
| Description | Rabbit Polyclonal Antibody |
| Host | Rabbit |
| Application | WB,ELISA |
| Reactivity | Human,Rat,Mouse |

Performance

| | |
|---------------------|--|
| Conjugation | Unconjugated |
| Modification | Unmodified |
| Isotype | IgG |
| Clonality | Polyclonal |
| Form | Liquid |
| Storage | Store at 4°C short term. Aliquot and store at -20°C long term. Avoid freeze/thaw cycles. |
| Buffer | Liquid in PBS containing 50% glycerol, 0.5% BSA and 0.02% New type preservative N. |
| Purification | Affinity purification |

Immunogen

| | |
|--------------------------|---|
| Gene Name | SCTR |
| Alternative Names | SCTR; Secretin receptor; SCT-R |
| Gene ID | 6344.0 |
| SwissProt ID | P47872.The antiserum was produced against synthesized peptide derived from human SCTR. AA range:100-149 |

Application

| | |
|-------------------------|--|
| Dilution Ratio | WB 1:500 - 1:2000. ELISA: 1:20000. Not yet tested in other applications. |
| Molecular Weight | 48kD |

Product Name: Secretin Receptor Rabbit Polyclonal Antibody
Catalog #: APRab17699



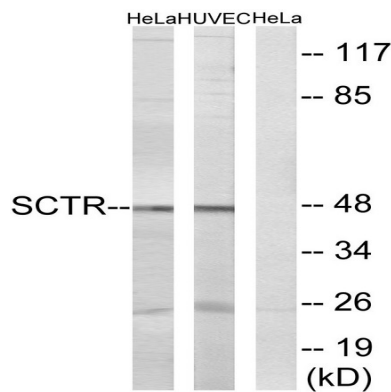
Background

secretin receptor(SCTR) Homo sapiens The protein encoded by this gene is a G protein-coupled receptor and belongs to the glucagon-VIP-secretin receptor family. It binds secretin which is the most potent regulator of pancreatic bicarbonate, electrolyte and volume secretion. Secretin and its receptor are suggested to be involved in pancreatic cancer and autism. [provided by RefSeq, Jul 2008],function:This is a receptor for secretin. The activity of this receptor is mediated by G proteins which activate adenylyl cyclase.,similarity:Belongs to the G-protein coupled receptor 2 family.,

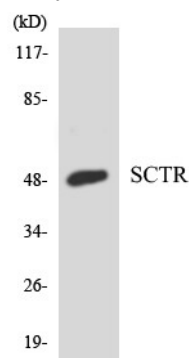
Research Area

Neuroactive ligand-receptor interaction;

Image Data

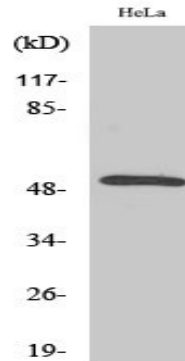


Western blot analysis of lysates from HeLa and HUVEC cells, using SCTR Antibody. The lane on the right is blocked with the synthesized peptide.



Western blot analysis of the lysates from HeLa cells using SCTR antibody.

Product Name: Secretin Receptor Rabbit Polyclonal Antibody
Catalog #: APRab17699



Western Blot analysis of various cells using Secretin Receptor Polyclonal Antibody diluted at 1 : 1000

Note

For research use only.