

Summary

Production Name	Secretin Rabbit Polyclonal Antibody
Description	Rabbit Polyclonal Antibody
Host	Rabbit
Application	WB
Reactivity	Human,Rat,Mouse

Performance

Conjugation	Unconjugated
Modification	Unmodified
Isotype	IgG
Clonality	Polyclonal
Form	Liquid
Storage	Store at 4°C short term. Aliquot and store at -20°C long term. Avoid freeze/thaw cycles.
Buffer	Liquid in PBS containing 50% glycerol, 0.5% BSA and 0.02% New type preservative N.
Purification	Affinity purification

Immunogen

Gene Name	SCT
Alternative Names	Secretin
Gene ID	6343.0
SwissProt ID	P09683.Synthesized peptide derived from human Secretin

Application

Dilution Ratio	WB 1:500-2000; ELISA 2000-20000
Molecular Weight	13kD

Background

This gene encodes a member of the glucagon family of peptides. The encoded preproprotein is secreted by endocrine S cells in the proximal small intestinal mucosa as a prohormone, then proteolytically processed to generate the mature

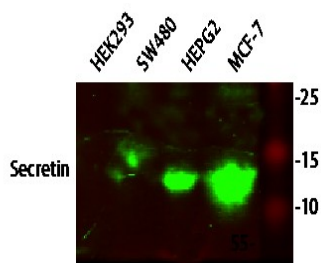
Product Name: Secretin Rabbit Polyclonal Antibody
Catalog #: APRab17698



peptide hormone. The release of this active peptide hormone is stimulated by either fatty acids or acidic pH in the duodenum. This hormone stimulates the secretion of bile and bicarbonate in the duodenum, pancreatic and biliary ducts. [provided by RefSeq, Feb 2016],function:Stimulates formation of NaHCO_3 -rich pancreatic juice and secretion of NaHCO_3 -rich bile and inhibits HCl production by the stomach.,online information:Secretin entry,similarity:Belongs to the glucagon family.,

Research Area

Image Data



Western blot analysis of various lysates, primary antibody was diluted at 1:1000, 4° over night, secondary antibody was diluted at 1:10000, 37° 1 hour.

Note

For research use only.