

Product Name: SCP-2 Rabbit Polyclonal Antibody
Catalog #: APRab17666



Summary

Production Name	SCP-2 Rabbit Polyclonal Antibody
Description	Rabbit Polyclonal Antibody
Host	Rabbit
Application	WB
Reactivity	Human,Rat,Mouse

Performance

Conjugation	Unconjugated
Modification	Unmodified
Isotype	IgG
Clonality	Polyclonal
Form	Liquid
Storage	Store at 4°C short term. Aliquot and store at -20°C long term. Avoid freeze/thaw cycles.
Buffer	Liquid in PBS containing 50% glycerol, 0.5% BSA and 0.02% New type preservative N.
Purification	Affinity purification

Immunogen

Gene Name	SYCP2
Alternative Names	SYCP2; SCP2; Synaptonemal complex protein 2; SCP-2; Synaptonemal complex lateral element protein; hsSCP2
Gene ID	10388.0
SwissProt ID	Q9BX26.Synthesized peptide derived from the Internal region of human SCP-2.

Application

Dilution Ratio	WB 1:500-2000; ELISA 2000-20000
Molecular Weight	175kD

Background

The synaptonemal complex is a proteinaceous structure that links homologous chromosomes during the prophase of

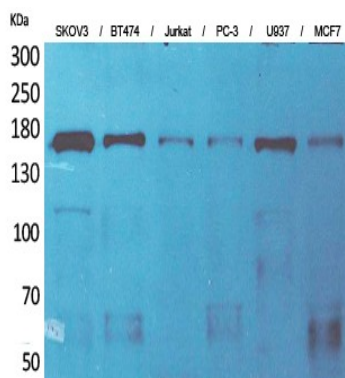
Product Name: SCP-2 Rabbit Polyclonal Antibody
Catalog #: APRab17666



meiosis. The protein encoded by this gene is a major component of the synaptonemal complex and may bind DNA at scaffold attachment regions. The encoded protein requires synaptonemal complex protein 3, but not 1, for inclusion in the synaptonemal complex. [provided by RefSeq, Jul 2008],function:Major component of the axial/lateral elements of synaptonemal complexes (SCS) during meiotic prophase. May be involved in the organization of chromatin by temporarily binding to DNA scaffold attachment regions. Requires SYCP3, but not SYCP1, in order to be incorporated into the axial/lateral elements.,similarity:Belongs to the SYCP2 family.,subcellular location:In axial/lateral elements of the tripartite segments of synaptonemal complexes.,subunit:Heterodimer with SYCP3. Interacts with SYCP3, SMC1A and SMC3.,

Research Area

Image Data



Western Blot analysis of SKOV3, BT474, Jurkat, PC-3, U937, MCF7 cells using SCP-2 Polyclonal Antibody.. Secondary antibody was diluted at 1:20000 cells nucleus extracted by Minute TM Cytoplasmic and Nuclear Fractionation kit (SC-003, Invent biotech, MN, USA) .

Note

For research use only.