

Summary

Production Name	SCML2 Rabbit Polyclonal Antibody
Description	Rabbit Polyclonal Antibody
Host	Rabbit
Application	WB
Reactivity	Human,Rat,Mouse

Performance

Conjugation	Unconjugated
Modification	Unmodified
Isotype	IgG
Clonality	Polyclonal
Form	Liquid
Storage	Store at 4°C short term. Aliquot and store at -20°C long term. Avoid freeze/thaw cycles.
Buffer	Liquid in PBS containing 50% glycerol, 0.5% BSA and 0.02% New type preservative N.
Purification	Affinity purification

Immunogen

Gene Name	SCML2
Alternative Names	SCML2; Sex comb on midleg-like protein 2
Gene ID	10389.0
SwissProt ID	Q9UQR0.Synthesized peptide derived from the Internal region of human SCML2.

Application

Dilution Ratio	WB 1:500-2000; ELISA 2000-20000
Molecular Weight	77kD

Background

This gene encodes a member of the Polycomb group proteins. These proteins form the Polycomb repressive complexes which are involved in transcriptional repression. The encoded protein binds histone peptides that are monomethylated at

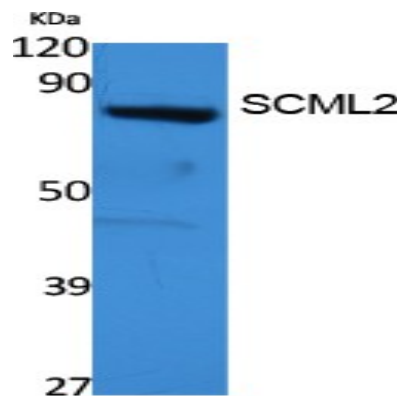
Product Name: SCML2 Rabbit Polyclonal Antibody
Catalog #: APRab17651



lysine residues and may be involved in regulating homeotic gene expression during development. [provided by RefSeq, Jun 2010],function:Putative Polycomb group (PcG) protein. PcG proteins act by forming multiprotein complexes, which are required to maintain the transcriptionally repressive state of homeotic genes throughout development.,PTM:Phosphorylated upon DNA damage, probably by ATM or ATR.,similarity:Belongs to the SCM family.,similarity:Contains 1 SAM (sterile alpha motif) domain.,similarity:Contains 2 MBT repeats.,tissue specificity:Highly expressed in placenta, thymus and testis. Detected at lower levels in brain, liver, skeletal muscle, pancreas and ovary.,

Research Area

Image Data



Western Blot analysis of extracts from 293 cells, using SCML2 Polyclonal Antibody.. Secondary antibody was diluted at 1:20000 cells nucleus extracted by Minute TM Cytoplasmic and Nuclear Fractionation kit (SC-003,Inventbiotech,MN,USA) .

Note

For research use only.