
Summary

Production Name	SCFD1 Rabbit Polyclonal Antibody
Description	Rabbit Polyclonal Antibody
Host	Rabbit
Application	WB,
Reactivity	Human,Mouse,Rat

Performance

Conjugation	Unconjugated
Modification	Unmodified
Isotype	IgG
Clonality	Polyclonal
Form	Liquid
Storage	Store at 4°C short term. Aliquot and store at -20°C long term. Avoid freeze/thaw cycles.
Buffer	Liquid in PBS containing 50% glycerol, 0.5% BSA and 0.02% New type preservative N.
Purification	Affinity purification

Immunogen

Gene Name	SCFD1
Alternative Names	SCFD1; C14orf163; KIAA0917; STXBP1L2; FKSG23; Sec1 family domain-containing protein 1; SLY1 homolog; Sly1p; Syntaxin-binding protein 1-like 2
Gene ID	23256.0
SwissProt ID	Q8WVM8.The antiserum was produced against synthesized peptide derived from human SCFD1. AA range:533-582

Application

Dilution Ratio	WB 1:500-2000
Molecular Weight	

Product Name: SCFD1 Rabbit Polyclonal Antibody
Catalog #: APRab17643

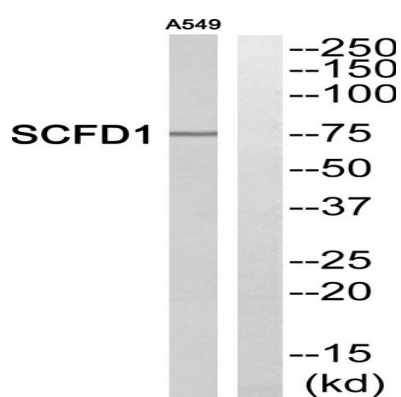


Background

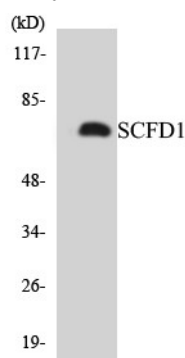
function:Involved in vesicular transport between the endoplasmic reticulum and the Golgi.,PTM:Phosphorylated upon DNA damage, probably by ATM or ATR.,similarity:Belongs to the STXBP/unc-18/SEC1 family.,subunit:Binds STX5A.,function:Involved in vesicular transport between the endoplasmic reticulum and the Golgi.,PTM:Phosphorylated upon DNA damage, probably by ATM or ATR.,similarity:Belongs to the STXBP/unc-18/SEC1 family.,subunit:Binds STX5A.,

Research Area

Image Data



Western blot analysis of SCFD1 Antibody. The lane on the right is blocked with the SCFD1 peptide.



Western blot analysis of the lysates from 293 cells using SCFD1 antibody.

Product Name: SCFD1 Rabbit Polyclonal Antibody
Catalog #: APRab17643



Western Blot analysis of various cells using SCFD1 Polyclonal Antibody

Note

For research use only.