
Summary

Production Name	SCAMP1 Rabbit Polyclonal Antibody
Description	Rabbit Polyclonal Antibody
Host	Rabbit
Application	WB
Reactivity	Human,Mouse,Rat

Performance

Conjugation	Unconjugated
Modification	Unmodified
Isotype	IgG
Clonality	Polyclonal
Form	Liquid
Storage	Store at 4°C short term. Aliquot and store at -20°C long term. Avoid freeze/thaw cycles.
Buffer	Liquid in PBS containing 50% glycerol, 0.5% BSA and 0.02% New type preservative N.
Purification	Affinity purification

Immunogen

Gene Name	SCAMP1
Alternative Names	SCAMP1; SCAMP; Secretory carrier-associated membrane protein 1; Secretory carrier membrane protein 1
Gene ID	9522.0
SwissProt ID	O15126.The antiserum was produced against synthesized peptide derived from human SCAMP1. AA range:273-322

Application

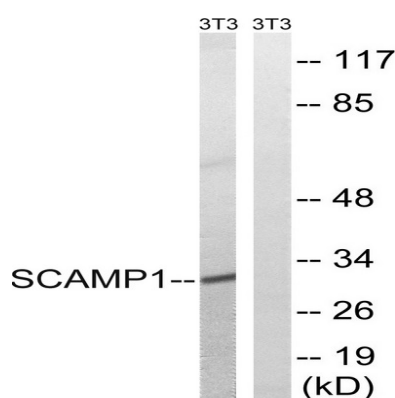
Dilution Ratio	WB 1:500-2000
Molecular Weight	32kD

Background

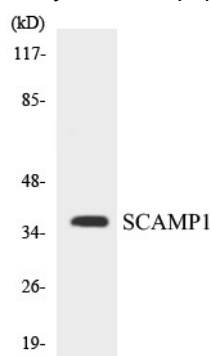
This gene product belongs to the SCAMP family of proteins, which are secretory carrier membrane proteins. They function as carriers to the cell surface in post-golgi recycling pathways. Different family members are highly related products of distinct genes, and are usually expressed together. These findings suggest that these protein family members may function at the same site during vesicular transport rather than in separate pathways. A pseudogene of this gene has been defined on chromosome 1. Alternative splicing results in multiple transcript variants. [provided by RefSeq, Mar 2014],function:Functions in post-Golgi recycling pathways. Acts as a recycling carrier to the cell surface.,similarity:Belongs to the SCAMP family.,subunit:Interacts with AP1GBP1 and ITSN1 (By similarity). Interacts with SLC9A7.,tissue specificity:Widely expressed, with highest expression in brain.,

Research Area

Image Data



Western blot analysis of lysates from NIH/3T3 cells, using SCAMP1 Antibody. The lane on the right is blocked with the synthesized peptide.



Western blot analysis of the lysates from HeLa cells using SCAMP1 antibody.

Product Name: SCAMP1 Rabbit Polyclonal Antibody
Catalog #: APRab17634



Note

For research use only.