

**Product Name: RSK3 Rabbit Polyclonal Antibody**  
**Catalog #: APRab17409**



## Summary

|                        |                                 |
|------------------------|---------------------------------|
| <b>Production Name</b> | RSK3 Rabbit Polyclonal Antibody |
| <b>Description</b>     | Rabbit Polyclonal Antibody      |
| <b>Host</b>            | Rabbit                          |
| <b>Application</b>     | WB,ELISA                        |
| <b>Reactivity</b>      | Human,Mouse                     |

## Performance

|                     |  |
|---------------------|--|
| <b>Conjugation</b>  | Unconjugated   |
| <b>Modification</b> | Unmodified   |
| <b>Isotype</b>      | IgG  |
| <b>Clonality</b>    | Polyclonal   |
| <b>Form</b>         | Liquid   |
| <b>Storage</b>      | Store at 4°C short term. Aliquot and store at -20°C long term. Avoid freeze/thaw cycles. |
| <b>Buffer</b>       | Liquid in PBS containing 50% glycerol, 0.5% BSA and 0.02% New type preservative N.       |
| <b>Purification</b> | Affinity purification  |

## Immunogen

|                          |  |
|--------------------------|--|
| <b>Gene Name</b>         | RPS6KA2 MAPKAPK1C RSK3   |
| <b>Alternative Names</b> | RPS6KA2 MAPKAPK1C RSK3   |
| <b>Gene ID</b>           | 6196.0   |
| <b>SwissProt ID</b>      | Q15349.Synthetic peptide from human protein at AA range: 330-400 |

## Application

|                         |                                  |
|-------------------------|----------------------------------|
| <b>Dilution Ratio</b>   | WB 1:500 - 1:2000. ELISA: 1:5000 |
| <b>Molecular Weight</b> | 80kD                             |

## Background

ribosomal protein S6 kinase A2(RPS6KA2) Homo sapiens This gene encodes a member of the RSK (ribosomal S6 kinase)

**Product Name: RSK3 Rabbit Polyclonal Antibody**  
**Catalog #: APRab17409**

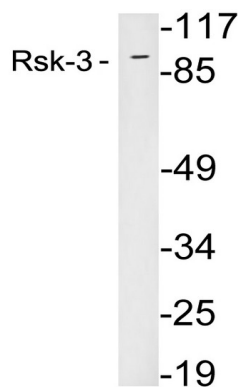


family of serine/threonine kinases. This kinase contains two non-identical kinase catalytic domains and phosphorylates various substrates, including members of the mitogen-activated kinase (MAPK) signalling pathway. The activity of this protein has been implicated in controlling cell growth and differentiation. Alternative splice variants, encoding different isoforms, have been characterized. [provided by RefSeq, Jan 2016],catalytic activity:ATP + a protein = ADP + a phosphoprotein.,cofactor:Magnesium.,enzyme regulation:Activated by multiple phosphorylations on threonine and serine residues.,function:Serine/threonine kinase that may play a role in mediating the growth-factor and stress induced activation of the transcription factor CREB.,PTM:Autophosphorylated on Ser-377, as part of the activation process.,similarity:Belongs to the protein kinase superfamily.,similarity:Belongs to the protein kinase superfamily. AGC Ser/Thr protein kinase family. S6 kinase subfamily.,similarity:Contains 1 AGC-kinase C-terminal domain.,similarity:Contains 2 protein kinase domains.,subunit:Forms a complex with either ERK1 or ERK2 in quiescent cells. Transiently dissociates following mitogenic stimulation.,tissue specificity:Expressed in many tissues. Highest expression in lung and skeletal muscle.,

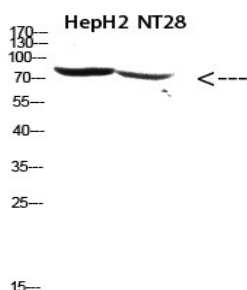
**Research Area**

MAPK\_ERK\_Growth;MAPK\_G\_Protein;Oocyte meiosis;mTOR;Long-term potentiation;Neurotrophin;Progesterone-mediated oocyte maturation;

**Image Data**



Western blot analysis of lysates from 293 cells, using Rsk-3 antibody.



Western Blot analysis of hepg2, NT28 cells using Antibody diluted at 500. Secondary antibody was diluted at 1:20000

**Product Name: RSK3 Rabbit Polyclonal Antibody**  
**Catalog #: APRab17409**

---



**Note**

For research use only.