

Product Name: RREB1 Rabbit Polyclonal Antibody
Catalog #: APRab17382



Summary

| | |
|------------------------|----------------------------------|
| Production Name | RREB1 Rabbit Polyclonal Antibody |
| Description | Rabbit Polyclonal Antibody |
| Host | Rabbit |
| Application | IHC,ELISA |
| Reactivity | Human,Mouse |

Performance

| | |
|---------------------|--|
| Conjugation | Unconjugated |
| Modification | Unmodified |
| Isotype | IgG |
| Clonality | Polyclonal |
| Form | Liquid |
| Storage | Store at 4°C short term. Aliquot and store at -20°C long term. Avoid freeze/thaw cycles. |
| Buffer | Liquid in PBS containing 50% glycerol, 0.5% BSA and 0.02% New type preservative N. |
| Purification | Affinity purification |

Immunogen

| | |
|--------------------------|--|
| Gene Name | RREB1 |
| Alternative Names | RREB1; FINB; Ras-responsive element-binding protein 1; RREB-1; Finger protein in nuclear bodies; Raf-responsive zinc finger protein LZ321; Zinc finger motif enhancer-binding protein 1; Zep-1 |
| Gene ID | 6239.0 |
| SwissProt ID | Q92766.The antiserum was produced against synthesized peptide derived from human RREB1. AA range:560-609 |

Application

| | |
|-------------------------|--------------------------------|
| Dilution Ratio | IHC 1:100-1:300 ELISA: 1:20000 |
| Molecular Weight | 180kD |

Product Name: RREB1 Rabbit Polyclonal Antibody
Catalog #: APRab17382

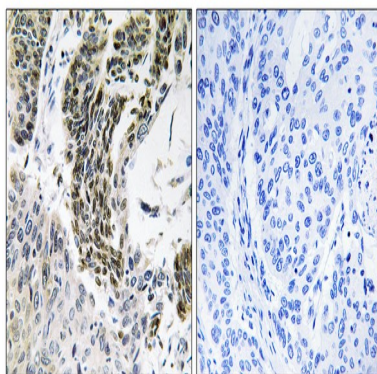


Background

ras responsive element binding protein 1(RREB1) Homo sapiens The protein encoded by this gene is a zinc finger transcription factor that binds to RAS-responsive elements (RREs) of gene promoters. It has been shown that the calcitonin gene promoter contains an RRE and that the encoded protein binds there and increases expression of calcitonin, which may be involved in Ras/Raf-mediated cell differentiation. Multiple transcript variants encoding several different isoforms have been found for this gene. [provided by RefSeq, Dec 2009],function:Transcription factor that binds specifically to the RAS-responsive elements (RRE) of gene promoters. May be involved in Ras/Raf-mediated cell differentiation by enhancing calcitonin expression. Represses the angiotensinogen gene. Negatively regulates the transcriptional activity of AR. Potentiates the transcriptional activity of NEUROD1.,PTM:Phosphorylated upon DNA damage, probably by ATM or ATR.,sequence caution:Contaminating sequence. Potential poly-A sequence.,sequence caution:Numerous sequencing errors.,sequence caution:Translation N-terminally extended.,similarity:Belongs to the krueppel C2H2-type zinc-finger protein family.,similarity:Contains 15 C2H2-type zinc fingers.,subunit:Interacts with NEUROD1 and AR.,tissue specificity:Expressed in heart, placenta, lung, liver, skeletal muscle, kidney and pancreas. Not found in the brain.,

Research Area

Image Data



Immunohistochemistry analysis of paraffin-embedded human lung carcinoma tissue, using RREB1 Antibody. The picture on the right is blocked with the synthesized peptide.

Note

For research use only.