

Summary

Production Name	RPS6KL1 Rabbit Polyclonal Antibody
Description	Rabbit Polyclonal Antibody
Host	Rabbit
Application	IHC,ELISA
Reactivity	Human,Rat,Mouse

Performance

Conjugation	Unconjugated
Modification	Unmodified
Isotype	IgG
Clonality	Polyclonal
Form	Liquid
Storage	Store at 4°C short term. Aliquot and store at -20°C long term. Avoid freeze/thaw cycles.
Buffer	Liquid in PBS containing 50% glycerol, 0.5% BSA and 0.02% New type preservative N.
Purification	Affinity purification

Immunogen

Gene Name	RPS6KL1
Alternative Names	RPS6KL1; Ribosomal protein S6 kinase-like 1
Gene ID	83694.0
SwissProt ID	Q9Y6S9.The antiserum was produced against synthesized peptide derived from human RPS6KL1. AA range:254-303

Application

Dilution Ratio	IHC 1:100-1:300 ELISA: 1:40000
Molecular Weight	

Background

catalytic activity:ATP + a protein = ADP + a phosphoprotein.,similarity:Belongs to the protein kinase superfamily. Ser/Thr

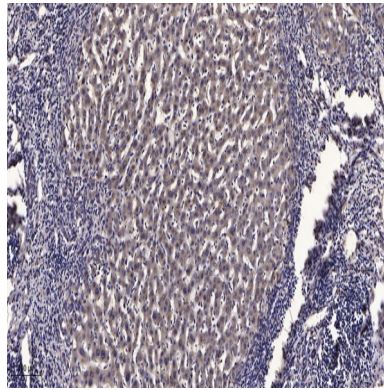
Product Name: RPS6KL1 Rabbit Polyclonal Antibody
Catalog #: APRab17374



protein kinase family. S6 kinase subfamily.,similarity:Contains 1 MIT domain.,similarity:Contains 1 protein kinase domain.,catalytic activity:ATP + a protein = ADP + a phosphoprotein.,similarity:Belongs to the protein kinase superfamily. Ser/Thr protein kinase family. S6 kinase subfamily.,similarity:Contains 1 MIT domain.,similarity:Contains 1 protein kinase domain.,

Research Area

Image Data



Immunohistochemical analysis of paraffin-embedded human liver cancer. 1, Antibody was diluted at 1:200 (4° overnight) .
2, Tris-EDTA,pH9.0 was used for antigen retrieval. 3,Secondary antibody was diluted at 1:200 (room temperature, 45min) .

Note

For research use only.