

Summary

Production Name	RPAB4 Rabbit Polyclonal Antibody
Description	Rabbit Polyclonal Antibody
Host	Rabbit
Application	WB,ELISA
Reactivity	Human,Mouse

Performance

Conjugation	Unconjugated
Modification	Unmodified
Isotype	IgG
Clonality	Polyclonal
Form	Liquid
Storage	Store at 4°C short term. Aliquot and store at -20°C long term. Avoid freeze/thaw cycles.
Buffer	Liquid in PBS containing 50% glycerol, 0.5% BSA and 0.02% New type preservative N.
Purification	Affinity purification

Immunogen

Gene Name	POLR2K DNA-directed RNA polymerases I, II, and III subunit RPABC4 (RNA polymerases I, II, and
Alternative Names	III subunit ABC4;ABC10-alpha;DNA-directed RNA polymerase II subunit K;RNA polymerase II 7.0 kDa subunit;RPB7.0;RPB10alpha)
Gene ID	5440.0
SwissProt ID	P53803.Synthesized peptide derived from human RPAB4 AA range: 1-50

Application

Dilution Ratio	IHC 1:50-200 ELISA(peptide)1:5000-20000
Molecular Weight	

Background

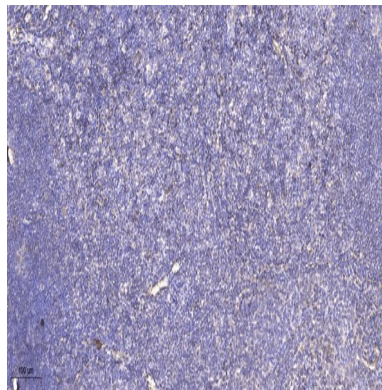
Product Name: RPAB4 Rabbit Polyclonal Antibody
Catalog #: APRab17343



This gene encodes one of the smallest subunits of RNA polymerase II, the polymerase responsible for synthesizing messenger RNA in eukaryotes. This subunit is shared by the other two DNA-directed RNA polymerases. [provided by RefSeq, Jul 2008],function:DNA-dependent RNA polymerase catalyzes the transcription of DNA into RNA using the four ribonucleoside triphosphates as substrates. Common component of RNA polymerases I, II and III which synthesize ribosomal RNA precursors, mRNA precursors and many functional non-coding RNAs, and a small RNAs, such as 5S rRNA and tRNAs, respectively.,similarity:Belongs to the archaeal rpoP/eukaryotic RPC10 RNA polymerase subunit family.,subunit:Component of the RNA polymerase I (Pol I), RNA polymerase II (Pol II) and RNA polymerase III (Pol III) complexes consisting of at least 13, 12 and 17 subunits, respectively.,

Research Area

Image Data



Immunohistochemical analysis of paraffin-embedded human tonsil. 1, Antibody was diluted at 1:200 (4° overnight) . 2, Tris-EDTA,pH9.0 was used for antigen retrieval. 3,Secondary antibody was diluted at 1:200 (room temperature, 45min) .

Note

For research use only.