

Product Name: RPA14 Rabbit Polyclonal Antibody
Catalog #: APRab17336



Summary

Production Name	RPA14 Rabbit Polyclonal Antibody
Description	Rabbit Polyclonal Antibody
Host	Rabbit
Application	WB
Reactivity	Human,Mouse

Performance

Conjugation	Unconjugated
Modification	Unmodified
Isotype	IgG
Clonality	Polyclonal
Form	Liquid
Storage	Store at 4°C short term. Aliquot and store at -20°C long term. Avoid freeze/thaw cycles.
Buffer	Liquid in PBS containing 50% glycerol, 0.5% BSA and 0.02% New type preservative N.
Purification	Affinity purification

Immunogen

Gene Name	RPA3 REPA3 RPA14
Alternative Names	Replication protein A 14 kDa subunit (RP-A p14) (Replication factor A protein 3) (RF-A protein 3)
Gene ID	6119.0
SwissProt ID	P35244.Synthetic peptide from human protein at AA range: 30-80

Application

Dilution Ratio	WB 1:500-2000
Molecular Weight	14kD

Background

function:Required for DNA recombination, repair and replication. The activity of RP-A is mediated by single-stranded DNA

Product Name: RPA14 Rabbit Polyclonal Antibody
Catalog #: APRab17336

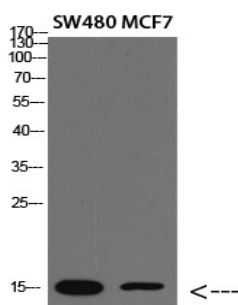


binding and protein interactions.,subunit:Heterotrimer of 70, 32 and 14 kDa chains. The DNA-binding activity may reside exclusively on the 70 kDa subunit. Interacts with RPA4.,function:Required for DNA recombination, repair and replication. The activity of RP-A is mediated by single-stranded DNA binding and protein interactions.,subunit:Heterotrimer of 70, 32 and 14 kDa chains. The DNA-binding activity may reside exclusively on the 70 kDa subunit. Interacts with RPA4.,

Research Area

DNA replication;Nucleotide excision repair;Mismatch repair;Homologous recombination;

Image Data



Western blot analysis of lysate, antibody was diluted at 2000. Secondary antibody was diluted at 1:20000

Note

For research use only.