

Product Name: RPA135 Rabbit Polyclonal Antibody
Catalog #: APRab17335



Summary

Production Name	RPA135 Rabbit Polyclonal Antibody
Description	Rabbit Polyclonal Antibody
Host	Rabbit
Application	IHC,ELISA
Reactivity	Human,Mouse,Rat

Performance

Conjugation	Unconjugated
Modification	Unmodified
Isotype	IgG
Clonality	Polyclonal
Form	Liquid
Storage	Store at 4°C short term. Aliquot and store at -20°C long term. Avoid freeze/thaw cycles.
Buffer	Liquid in PBS containing 50% glycerol, 0.5% BSA and 0.02% New type preservative N.
Purification	Affinity purification

Immunogen

Gene Name	POLR1B
Alternative Names	POLR1B; DNA-directed RNA polymerase I subunit RPA2; RNA polymerase I subunit 2; DNA-directed RNA polymerase I 135 kDa polypeptide; RPA135
Gene ID	84172.0
SwissProt ID	Q9H9Y6.Synthesized peptide derived from the Internal region of human RPA135.

Application

Dilution Ratio	IHC 1:100-1:300 ELISA: 1:40000
Molecular Weight	125kD

Background

Eukaryotic RNA polymerase I (pol I) is responsible for the transcription of ribosomal RNA (rRNA) genes and production of

Product Name: RPA135 Rabbit Polyclonal Antibody
Catalog #: APRab17335

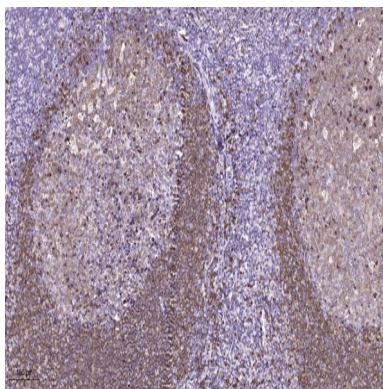


rRNA, the primary component of ribosomes. Pol I is a multisubunit enzyme composed of 6 to 14 polypeptides, depending on the species. Most of the mass of the pol I complex derives from the 2 largest subunits, Rpa1 and Rpa2 in yeast. POLR1B is homologous to Rpa2 (Seither and Grummt, 1996 [PubMed 8921381]).[supplied by OMIM, Mar 2008],catalytic activity:Nucleoside triphosphate + RNA(n) = diphosphate + RNA(n+1),function:DNA-dependent RNA polymerase catalyzes the transcription of DNA into RNA using the four ribonucleoside triphosphates as substrates. Second largest core component of RNA polymerase I which synthesizes ribosomal RNA precursors. Proposed to contribute to the polymerase catalytic activity and forms the polymerase active center together with the largest subunit. Pol I is composed of mobile elements and RPA2 is part of the core element with the central large cleft and probably a clamp element that moves to open and close the cleft.,similarity:Belongs to the RNA polymerase beta chain family.,subunit:Component of the RNA polymerase I (Pol I) complex consisting of at least 13 subunits.,

Research Area

Purine metabolism;Pyrimidine metabolism;RNA polymerase;

Image Data



Immunohistochemical analysis of paraffin-embedded human tonsil. 1, Tris-EDTA,pH9.0 was used for antigen retrieval. 2 Antibody was diluted at 1:200 (4° overnight.3,Secondary antibody was diluted at 1:200 (room temperature, 45min) .

Note

For research use only.