

## Summary

<b>Production Name</b>	Rock-2 Rabbit Polyclonal Antibody
<b>Description</b>	Rabbit Polyclonal Antibody
<b>Host</b>	Rabbit
<b>Application</b>	WB
<b>Reactivity</b>	Human,Mouse,Rat,Monkey

## Performance

<b>Conjugation</b>	Unconjugated
<b>Modification</b>	Unmodified
<b>Isotype</b>	IgG
<b>Clonality</b>	Polyclonal
<b>Form</b>	Liquid
<b>Storage</b>	Store at 4°C short term. Aliquot and store at -20°C long term. Avoid freeze/thaw cycles.
<b>Buffer</b>	Liquid in PBS containing 50% glycerol, 0.5% BSA and 0.02% New type preservative N.
<b>Purification</b>	Affinity purification

## Immunogen

<b>Gene Name</b>	ROCK2
<b>Alternative Names</b>	ROCK2; KIAA0619; Rho-associated protein kinase 2; Rho kinase 2; Rho-associated; coiled-coil-containing protein kinase 2; Rho-associated, coiled-coil-containing protein kinase II; ROCK-II; p164 ROCK-2
<b>Gene ID</b>	9475.0
<b>SwissProt ID</b>	O75116.The antiserum was produced against synthesized peptide derived from human ROCK2. AA range:691-740

## Application

<b>Dilution Ratio</b>	WB 1:500-1:2000.ELISA: 1:20000.
<b>Molecular Weight</b>	165kD

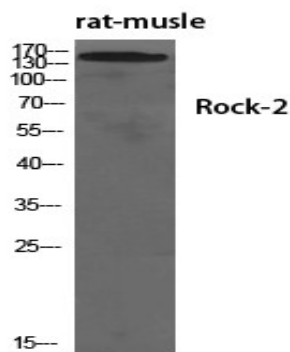
## Background

The protein encoded by this gene is a serine/threonine kinase that regulates cytokinesis, smooth muscle contraction, the formation of actin stress fibers and focal adhesions, and the activation of the c-fos serum response element. This protein, which is an isozyme of ROCK1 is a target for the small GTPase Rho. [provided by RefSeq, Jul 2008], catalytic activity: ATP + a protein = ADP + a phosphoprotein., enzyme regulation: Activated by RHOA binding., function: Protein kinase that phosphorylates a large number of important signaling proteins, and thereby regulates the assembly of the actin cytoskeleton. Promotes formation of stress fibers and of focal adhesion complexes. Plays a role in smooth muscle contraction., miscellaneous: Inhibited by Y-27632., PTM: Phosphorylated upon DNA damage, probably by ATM or ATR., similarity: Belongs to the protein kinase superfamily. AGC Ser/Thr protein kinase family., similarity: Contains 1 AGC-kinase C-terminal domain., similarity: Contains 1 PH domain., similarity: Contains 1 phorbol-ester/DAG-type zinc finger., similarity: Contains 1 protein kinase domain., similarity: Contains 1 REM (Hr1) repeat., subcellular location: Cytoplasmic, and associated with actin microfilaments and the plasma membrane., subunit: Homodimer. Binds RHOA that has been activated by GTP binding. Binds IRS1, RHOB and RHOC.,

## Research Area

Chemokine; Vascular smooth muscle contraction; WNT; WNT-T CELLTGF-beta; Axon guidance; Focal adhesion; Leukocyte transendothelial migration; Regulates Actin and Cytoskeleton; Pathogenic Escherichia coli infection;

## Image Data



Western Blot analysis of various cells using Rock-2 Polyclonal Antibody diluted at 1: 1000

## Note

For research use only.