

## Summary

<b>Production Name</b>	RO60 Rabbit Polyclonal Antibody
<b>Description</b>	Rabbit Polyclonal Antibody
<b>Host</b>	Rabbit
<b>Application</b>	WB
<b>Reactivity</b>	Human,Rat,Mouse

## Performance

<b>Conjugation</b>	Unconjugated
<b>Modification</b>	Unmodified
<b>Isotype</b>	IgG
<b>Clonality</b>	Polyclonal
<b>Form</b>	Liquid
<b>Storage</b>	Store at 4°C short term. Aliquot and store at -20°C long term. Avoid freeze/thaw cycles.
<b>Buffer</b>	Liquid in PBS containing 50% glycerol, 0.5% BSA and 0.02% New type preservative N.
<b>Purification</b>	Affinity purification

## Immunogen

<b>Gene Name</b>	TROVE2
<b>Alternative Names</b>	TROVE2; RO60; SSA2; 60 kDa SS-A/Ro ribonucleoprotein; 60 kDa Ro protein; 60 kDa ribonucleoprotein Ro; RoRNP; Ro 60 kDa autoantigen; Sjogren syndrome antigen A2; Sjogren syndrome type A antigen; SS-A; TROVE domain family member 2
<b>Gene ID</b>	6738.0
<b>SwissProt ID</b>	P10155.The antiserum was produced against synthesized peptide derived from human TROVE2. AA range:311-360

## Application

<b>Dilution Ratio</b>	WB 1: 500-2000
<b>Molecular Weight</b>	70kD

**Product Name: RO60 Rabbit Polyclonal Antibody**  
**Catalog #: APRab17302**



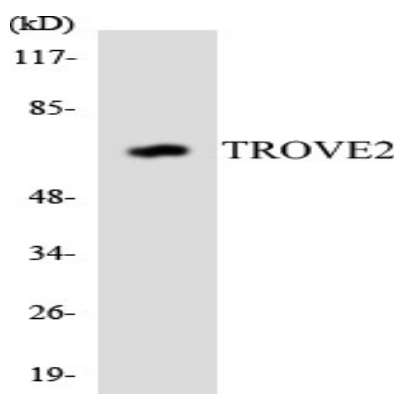
## Background

disease:Sera from patients with systemic lupus erythematosus (SLE) often contain antibodies that react with the normal cellular SSA2 protein as if this antigen was foreign.,function:RNA-binding protein that binds to several small cytoplasmic RNA molecules known as Y RNAs. May stabilize these RNAs from degradation.,PTM:Phosphorylated upon DNA damage, probably by ATM or ATR.,similarity:Belongs to the Ro 60 kDa family.,similarity:Contains 1 TROVE domain.,subunit:Found in a complex with PUF60 and Y5 RNA. Interacts with RIP11.,disease:Sera from patients with systemic lupus erythematosus (SLE) often contain antibodies that react with the normal cellular SSA2 protein as if this antigen was foreign.,function:RNA-binding protein that binds to several small cytoplasmic RNA molecules known as Y RNAs. May stabilize these RNAs from degradation.,PTM:Phosphorylated upon DNA damage, probably by ATM or ATR.,similarity:Belongs to the Ro 60 kDa family.,similarity:Contains 1 TROVE domain.,subunit:Found in a complex with PUF60 and Y5 RNA. Interacts with RIP11.,

## Research Area

Systemic lupus erythematosus;

## Image Data



Western blot analysis of the lysates from HepG2 cells using TROVE2 antibody.

## Note

For research use only.