

Product Name: RN-tre Rabbit Polyclonal Antibody
Catalog #: APRab17300



Summary

Production Name	RN-tre Rabbit Polyclonal Antibody
Description	Rabbit Polyclonal Antibody
Host	Rabbit
Application	IHC,ELISA
Reactivity	Human,Rat,Mouse

Performance

Conjugation	Unconjugated
Modification	Unmodified
Isotype	IgG
Clonality	Polyclonal
Form	Liquid
Storage	Store at 4°C short term. Aliquot and store at -20°C long term. Avoid freeze/thaw cycles.
Buffer	Liquid in PBS containing 50% glycerol, 0.5% BSA and 0.02% New type preservative N.
Purification	Affinity purification

Immunogen

Gene Name	USP6NL
Alternative Names	USP6NL; KIAA0019; USP6 N-terminal-like protein; Related to the N-terminus of tre; RN-tre
Gene ID	9712.0
SwissProt ID	Q92738.The antiserum was produced against synthesized peptide derived from human USP6NL. AA range:451-500

Application

Dilution Ratio	IHC 1:100-1:300 ELISA: 1:10000
Molecular Weight	

Background

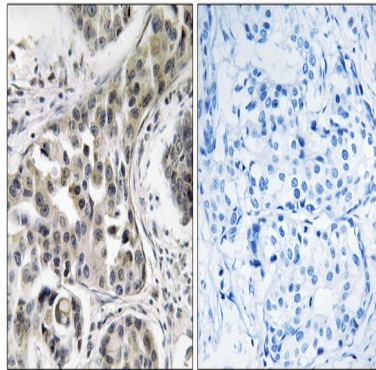
Product Name: RN-tre Rabbit Polyclonal Antibody
Catalog #: APRab17300



function:Acts as a GTPase-activating protein for RAB5A. Involved in receptor trafficking. In complex with EPS8 inhibits internalization of EGFR.,PTM:Phosphorylated upon DNA damage, probably by ATM or ATR.,similarity:Contains 1 Rab-GAP TBC domain.,subunit:Interacts with EPS8.,tissue specificity:Widely expressed.,function:Acts as a GTPase-activating protein for RAB5A. Involved in receptor trafficking. In complex with EPS8 inhibits internalization of EGFR.,PTM:Phosphorylated upon DNA damage, probably by ATM or ATR.,similarity:Contains 1 Rab-GAP TBC domain.,subunit:Interacts with EPS8.,tissue specificity:Widely expressed.,

Research Area

Image Data



Immunohistochemistry analysis of paraffin-embedded human breast carcinoma, using USP6NL Antibody. The picture on the right is blocked with the synthesized peptide.

Note

For research use only.