

Summary

Production Name	RNF138 Rabbit Polyclonal Antibody
Description	Rabbit Polyclonal Antibody
Host	Rabbit
Application	WB
Reactivity	Human,Mouse,Rat

Performance

Conjugation	Unconjugated
Modification	Unmodified
Isotype	IgG
Clonality	Polyclonal
Form	Liquid
Storage	Store at 4°C short term. Aliquot and store at -20°C long term. Avoid freeze/thaw cycles.
Buffer	Liquid in PBS containing 50% glycerol, 0.5% BSA and 0.02% New type preservative N.
Purification	Affinity purification

Immunogen

Gene Name	RNF138 RNF138; NARF; HSD-4; HSD4; E3 ubiquitin-protein ligase RNF138; Nemo-like kinase-associated RING finger protein; NLK-associated RING finger protein; hNARF; RING finger protein 138
Alternative Names	
Gene ID	51444.0
SwissProt ID	Q8WVD3.The antiserum was produced against synthesized peptide derived from human RNF138. AA range:31-80

Application

Dilution Ratio	WB 1:500-2000
Molecular Weight	28kD

Product Name: RNF138 Rabbit Polyclonal Antibody
Catalog #: APRab17287

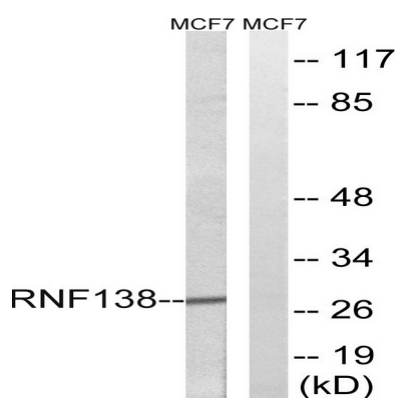


Background

ring finger protein 138(RNF138) Homo sapiens The protein encoded by this gene contains a RING finger, a motif present in a variety of functionally distinct proteins and known to be involved in protein-DNA and protein-protein interactions. Alternatively spliced transcript variants encoding distinct isoforms have been observed. [provided by RefSeq, Jul 2008],domain:The RING-type zinc finger domain mediates binding to an E2 ubiquitin-conjugating enzyme.,function:E3 ubiquitin-protein ligase. Together with NLK, involved in the ubiquitination and degradation of TCF/LEF. Also exhibits auto-ubiquitination activity in combination with UBE2K. May act as a negative regulator in the Wnt/beta-catenin-mediated signaling pathway.,pathway:Protein modification; protein ubiquitination.,PTM:Auto-ubiquitinated.,PTM:Phosphorylated upon DNA damage, probably by ATM or ATR.,similarity:Contains 1 RING-type zinc finger.,subunit:Interacts with nlk,

Research Area

Image Data



Western blot analysis of lysates from MCF-7 cells, using RNF138 Antibody. The lane on the right is blocked with the synthesized peptide.

Note

For research use only.