

Product Name: RMP Rabbit Polyclonal Antibody
Catalog #: APRab17252



Summary

Production Name	RMP Rabbit Polyclonal Antibody
Description	Rabbit Polyclonal Antibody
Host	Rabbit
Application	WB,IHC,ELISA
Reactivity	Human,Rat,Mouse

Performance

Conjugation	Unconjugated
Modification	Unmodified
Isotype	IgG
Clonality	Polyclonal
Form	Liquid
Storage	Store at 4°C short term. Aliquot and store at -20°C long term. Avoid freeze/thaw cycles.
Buffer	Liquid in PBS containing 50% glycerol, 0.5% BSA and 0.02% New type preservative N.
Purification	Affinity purification

Immunogen

Gene Name	URI1 URI1; C19orf2; NNX3; PPP1R19; RMP; URI; Unconventional prefoldin RPB5 interactor 1;
Alternative Names	Protein NNX3; Protein phosphatase 1 regulatory subunit 19; RNA polymerase II subunit 5-mediating protein; RPB5-mediating protein
Gene ID	8725.0
SwissProt ID	O94763.The antiserum was produced against synthesized peptide derived from human RMP. AA range:415-464

Application

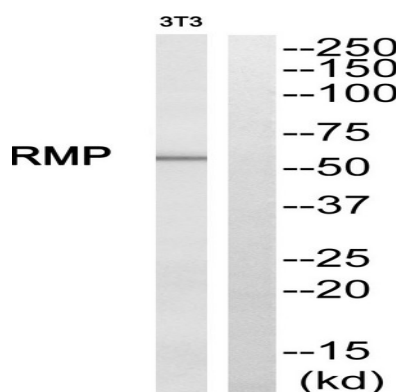
Dilution Ratio	WB 1:500 - 1:2000. IHC 1:100 - 1:300. ELISA: 1:40000..
Molecular Weight	56kD

Background

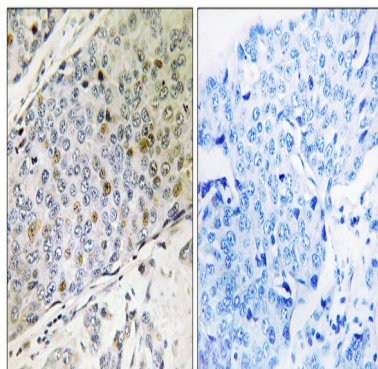
This gene encodes member of the prefoldin family of molecular chaperones. The encoded protein functions as a scaffolding protein and plays roles in ubiquitination and transcription, in part through interactions with the RNA polymerase II subunit RPB5. This gene may play a role in multiple malignancies including ovarian cancer and hepatocellular carcinoma. Alternatively spliced transcript variants encoding multiple isoforms have been observed for this gene, and a pseudogene of this gene is located on the long arm of chromosome 22. [provided by RefSeq, Nov 2011],function:Seems to be a scaffolding protein able to assemble a prefoldin-like complex that contains PFDs and proteins with roles in transcription and ubiquitination.,similarity:Belongs to the RNA polymerase II subunit 5-mediating protein family.,subunit:Component of the URI complex that contains PFD2, POLR2E/RPB5, TIP48, TIP49 and URI. Interacts with POLR2E/RPB5 and LRPPRC.,tissue specificity:Ubiquitous.,

Research Area

Image Data

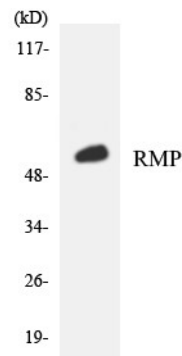


Western blot analysis of RMP Antibody. The lane on the right is blocked with the RMP peptide.



Immunohistochemistry analysis of paraffin-embedded human breast carcinoma, using RMP Antibody. The lane on the right is blocked with the RMP peptide.

Product Name: RMP Rabbit Polyclonal Antibody
Catalog #: APRab17252



Western blot analysis of the lysates from K562 cells using RMP antibody.

Note

For research use only.