

Summary

Production Name	RIOK1 Rabbit Polyclonal Antibody
Description	Rabbit Polyclonal Antibody
Host	Rabbit
Application	IHC,ELISA
Reactivity	Human,Mouse,Rat

Performance

Conjugation	Unconjugated
Modification	Unmodified
Isotype	IgG
Clonality	Polyclonal
Form	Liquid
Storage	Store at 4°C short term. Aliquot and store at -20°C long term. Avoid freeze/thaw cycles.
Buffer	Liquid in PBS containing 50% glycerol, 0.5% BSA and 0.02% New type preservative N.
Purification	Affinity purification

Immunogen

Gene Name	RIOK1
Alternative Names	RIOK1; Serine/threonine-protein kinase RIO1; RIO kinase 1
Gene ID	83732.0
SwissProt ID	Q9BRS2.Synthesized peptide derived from the Internal region of human RIOK1.

Application

Dilution Ratio IHC 1:100-1:300 ELISA: 1:40000

Molecular Weight

Background

This gene includes two alternatively spliced transcript variants, which encode different isoforms. The function of this gene has not been determined. [provided by RefSeq, Jul 2008],catalytic activity:ATP + a protein = ADP + a

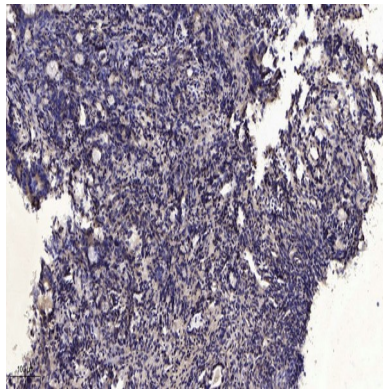
Product Name: RIOK1 Rabbit Polyclonal Antibody
Catalog #: APRab17202



phosphoprotein.,similarity:Belongs to the protein kinase superfamily. RIO-type Ser/Thr kinase family.,similarity:Contains 1 protein kinase domain.,

Research Area

Image Data



Immunohistochemical analysis of paraffin-embedded human Gastric adenocarcinoma. 1, Antibody was diluted at 1:200 (4° overnight) . 2, Tris-EDTA,pH9.0 was used for antigen retrieval. 3,Secondary antibody was diluted at 1:200 (room temperature, 45min) .

Note

For research use only.