

Product Name: Rim4 Rabbit Polyclonal Antibody
Catalog #: APRab17195



Summary

Production Name	Rim4 Rabbit Polyclonal Antibody
Description	Rabbit Polyclonal Antibody
Host	Rabbit
Application	IHC,WB,ELISA
Reactivity	Human,Mouse,Rat

Performance

Conjugation	Unconjugated
Modification	Unmodified
Isotype	IgG
Clonality	Polyclonal
Form	Liquid
Storage	Store at 4°C short term. Aliquot and store at -20°C long term. Avoid freeze/thaw cycles.
Buffer	Liquid in PBS containing 50% glycerol, 0.5% BSA and 0.02% New type preservative N.
Purification	Affinity purification

Immunogen

Gene Name	RIMS4
Alternative Names	RIMS4; C20orf190; Regulating synaptic membrane exocytosis protein 4; RIM4 gamma; Rab3-interacting molecule 4; RIM 4
Gene ID	140730.0
SwissProt ID	Q9H426.The antiserum was produced against synthesized peptide derived from human RIMS4. AA range:33-82

Application

Dilution Ratio	WB 1:500 - 1:2000. IHC 1:100 - 1:300. ELISA: 1:20000..
Molecular Weight	30kD

Product Name: Rim4 Rabbit Polyclonal Antibody
Catalog #: APRab17195

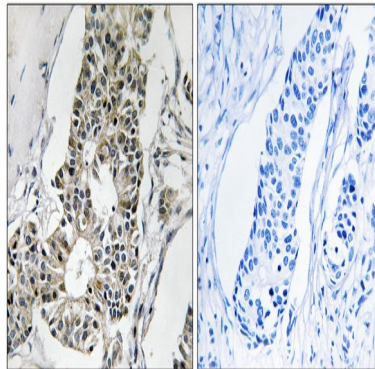


Background

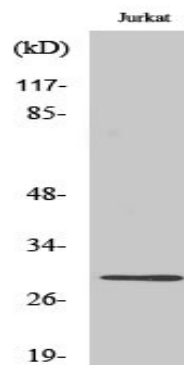
caution:Does not bind Rab-3.,function:Regulates synaptic membrane exocytosis.,PTM:Phosphorylated upon DNA damage, probably by ATM or ATR.,similarity:Contains 1 C2 domain.,subunit:Binds PPFIA3.,caution:Does not bind Rab-3.,function:Regulates synaptic membrane exocytosis.,PTM:Phosphorylated upon DNA damage, probably by ATM or ATR.,similarity:Contains 1 C2 domain.,subunit:Binds PPFIA3.,

Research Area

Image Data

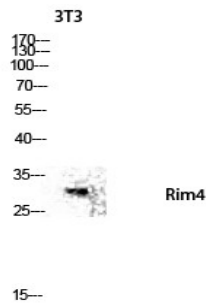


Immunohistochemistry analysis of paraffin-embedded human breast carcinoma tissue, using RIMS4 Antibody. The picture on the right is blocked with the synthesized peptide.



Western Blot analysis of various cells using Rim4 Polyclonal Antibody diluted at 1 : 500

Product Name: Rim4 Rabbit Polyclonal Antibody
Catalog #: APRab17195



Western blot analysis of 3T3 lysis using Rim4 antibody. Antibody was diluted at 1:500

Note

For research use only.