

Product Name: Ribosomal Protein S3 Rabbit Polyclonal Antibody
Catalog #: APRab17185



Summary

Production Name	Ribosomal Protein S3 Rabbit Polyclonal Antibody
Description	Rabbit Polyclonal Antibody
Host	Rabbit
Application	IHC,WB,
Reactivity	Human,Mouse,Rat

Performance

Conjugation	Unconjugated
Modification	Unmodified
Isotype	IgG
Clonality	Polyclonal
Form	Liquid
Storage	Store at 4°C short term. Aliquot and store at -20°C long term. Avoid freeze/thaw cycles.
Buffer	Liquid in PBS containing 50% glycerol, 0.5% BSA and 0.02% New type preservative N.
Purification	Affinity purification

Immunogen

Gene Name	RPS3
Alternative Names	RPS3; OK/SW-cl.26; 40S ribosomal protein S3
Gene ID	6188.0
SwissProt ID	P23396.The antiserum was produced against synthesized peptide derived from human RPS3. AA range:171-220

Application

Dilution Ratio	WB 1:500 - 1:2000. IHC 1:100 - 1:300. ELISA: 1:40000..
Molecular Weight	30kD

Product Name: Ribosomal Protein S3 Rabbit Polyclonal Antibody
Catalog #: APRab17185



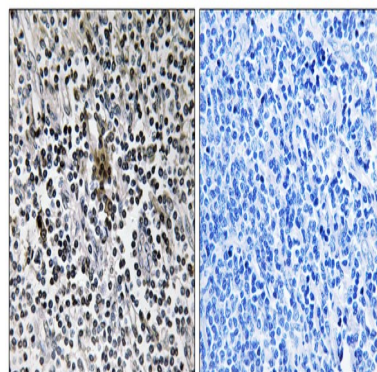
Background

Ribosomes, the organelles that catalyze protein synthesis, consist of a small 40S subunit and a large 60S subunit. Together these subunits are composed of 4 RNA species and approximately 80 structurally distinct proteins. This gene encodes a ribosomal protein that is a component of the 40S subunit, where it forms part of the domain where translation is initiated. The protein belongs to the S3P family of ribosomal proteins. Studies of the mouse and rat proteins have demonstrated that the protein has an extraribosomal role as an endonuclease involved in the repair of UV-induced DNA damage. The protein appears to be located in both the cytoplasm and nucleus but not in the nucleolus. Higher levels of expression of this gene in colon adenocarcinomas and adenomatous polyps compared to adjacent normal colonic mucosa have been observed. This gene is co-transcribed with the small nucleolar RNA genes U15A and similarity:Belongs to the ribosomal protein S3P family.,similarity:Contains 1 KH type-2 domain.,

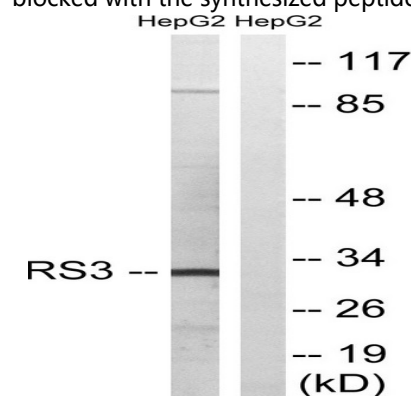
Research Area

Ribosome;

Image Data

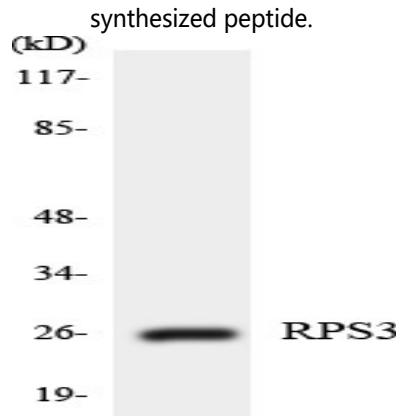


Immunohistochemistry analysis of paraffin-embedded human tonsil tissue, using RPS3 Antibody. The picture on the right is blocked with the synthesized peptide.

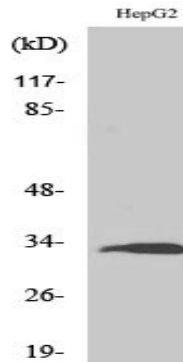


Western blot analysis of lysates from HepG2 cells, using RPS3 Antibody. The lane on the right is blocked with the

Product Name: Ribosomal Protein S3 Rabbit Polyclonal Antibody
Catalog #: APRab17185



Western blot analysis of the lysates from RAW264.7 cells using RPS3 antibody.



Western Blot analysis of various cells using Ribosomal Protein S3 Polyclonal Antibody

Note

For research use only.