

Product Name: Ribosomal Protein S25 Rabbit Polyclonal Antibody
Catalog #: APRab17183

Summary

| | |
|------------------------|--|
| Production Name | Ribosomal Protein S25 Rabbit Polyclonal Antibody |
| Description | Rabbit Polyclonal Antibody |
| Host | Rabbit |
| Application | IHC,ELISA |
| Reactivity | Human,Mouse,Rat |

Performance

| | |
|---------------------|--|
| Conjugation | Unconjugated |
| Modification | Unmodified |
| Isotype | IgG |
| Clonality | Polyclonal |
| Form | Liquid |
| Storage | Store at 4°C short term. Aliquot and store at -20°C long term. Avoid freeze/thaw cycles. |
| Buffer | Liquid in PBS containing 50% glycerol, 0.5% BSA and 0.02% New type preservative N. |
| Purification | Affinity purification |

Immunogen

| | |
|--------------------------|---|
| Gene Name | RPS25 |
| Alternative Names | RPS25; 40S ribosomal protein S25 |
| Gene ID | 6230.0 |
| SwissProt ID | P62851.The antiserum was produced against synthesized peptide derived from human RPS25. AA range:76-125 |

Application

| | |
|-------------------------|--------------------------------|
| Dilution Ratio | IHC 1:100-1:300 ELISA: 1:10000 |
| Molecular Weight | |

Background

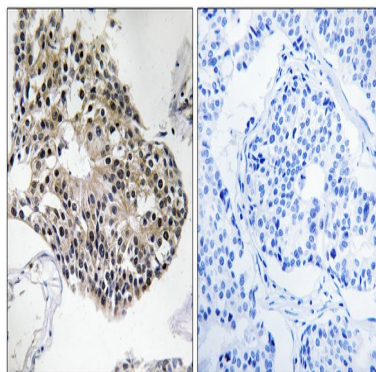
Product Name: Ribosomal Protein S25 Rabbit Polyclonal Antibody
Catalog #: APRab17183

Ribosomes, the organelles that catalyze protein synthesis, consist of a small 40S subunit and a large 60S subunit. Together these subunits are composed of 4 RNA species and approximately 80 structurally distinct proteins. This gene encodes a ribosomal protein that is a component of the 40S subunit. The protein belongs to the S25E family of ribosomal proteins. It is located in the cytoplasm. As is typical for genes encoding ribosomal proteins, there are multiple processed pseudogenes of this gene dispersed through the genome. [provided by RefSeq, Jul 2008],similarity:Belongs to the ribosomal protein S25e family.,

Research Area

Ribosome;

Image Data



Immunohistochemistry analysis of paraffin-embedded human breast carcinoma tissue, using RPS25 Antibody. The picture on the right is blocked with the synthesized peptide.

Note

For research use only.