

Product Name: Ribosomal Protein S20 Rabbit Polyclonal Antibody
Catalog #: APRab17180

Summary

Production Name	Ribosomal Protein S20 Rabbit Polyclonal Antibody
Description	Rabbit Polyclonal Antibody
Host	Rabbit
Application	IF, WB, IHC, ELISA
Reactivity	Human, Mouse, Rat

Performance

Conjugation	Unconjugated
Modification	Unmodified
Isotype	IgG
Clonality	Polyclonal
Form	Liquid
Storage	Store at 4°C short term. Aliquot and store at -20°C long term. Avoid freeze/thaw cycles.
Buffer	Liquid in PBS containing 50% glycerol, 0.5% BSA and 0.02% New type preservative N.
Purification	Affinity purification

Immunogen

Gene Name	RPS20
Alternative Names	RPS20; 40S ribosomal protein S20
Gene ID	6224.0
SwissProt ID	P60866. The antiserum was produced against synthesized peptide derived from human RPS20. AA range:31-80

Application

Dilution Ratio	WB 1:500 - 1:2000. IHC 1:100 - 1:300. IF 1:200 - 1:1000. ELISA: 1:40000. Not yet tested in other applications.
Molecular Weight	13kD

Product Name: Ribosomal Protein S20 Rabbit Polyclonal Antibody
Catalog #: APRab17180



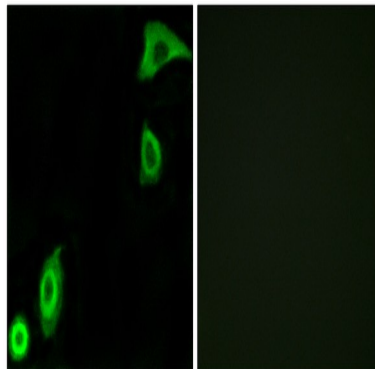
Background

Ribosomes, the organelles that catalyze protein synthesis, consist of a small 40S subunit and a large 60S subunit. Together these subunits are composed of 4 RNA species and approximately 80 structurally distinct proteins. This gene encodes a ribosomal protein that is a component of the 40S subunit. The protein belongs to the S10P family of ribosomal proteins. It is located in the cytoplasm. This gene is co-transcribed with the small nucleolar RNA gene U54, which is located in its second intron. As is typical for genes encoding ribosomal proteins, there are multiple processed pseudogenes of this gene dispersed through the genome. Two transcript variants encoding different isoforms have been identified for this gene. [provided by RefSeq, Apr 2009],similarity:Belongs to the ribosomal protein S10P family.,

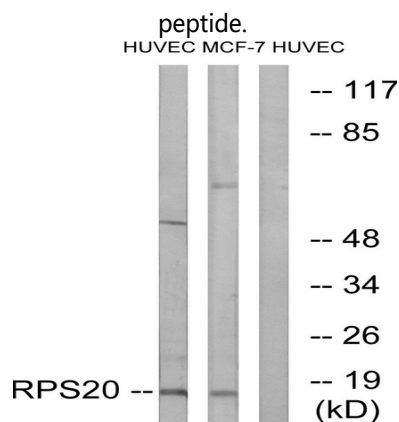
Research Area

Ribosome;

Image Data

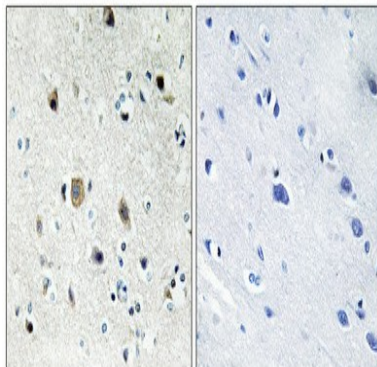


Immunofluorescence analysis of A549 cells, using RPS20 Antibody. The picture on the right is blocked with the synthesized



Western blot analysis of lysates from HUVEC and MCF-7 cells, using RPS20 Antibody. The lane on the right is blocked with the synthesized peptide.

**Product Name: Ribosomal Protein S20 Rabbit Polyclonal
Antibody**
Catalog #: APRab17180



Immunohistochemical analysis of paraffin-embedded Human brain. Antibody was diluted at 1:100 (4°,overnight) . High-pressure and temperature Tris-EDTA,pH8.0 was used for antigen retrieval. Negative contrl (right) obtaned from antibody was pre-absorbed by immunogen peptide.

Note

For research use only.