

**Product Name: Ribosomal Protein S19BP Rabbit Polyclonal Antibody**  
**Catalog #: APRab17178**

---

## Summary

<b>Production Name</b>	Ribosomal Protein S19BP Rabbit Polyclonal Antibody
<b>Description</b>	Rabbit Polyclonal Antibody
<b>Host</b>	Rabbit
<b>Application</b>	IHC,ELISA
<b>Reactivity</b>	Human,Rat,Mouse

## Performance

<b>Conjugation</b>	Unconjugated
<b>Modification</b>	Unmodified
<b>Isotype</b>	IgG
<b>Clonality</b>	Polyclonal
<b>Form</b>	Liquid
<b>Storage</b>	Store at 4°C short term. Aliquot and store at -20°C long term. Avoid freeze/thaw cycles.
<b>Buffer</b>	Liquid in PBS containing 50% glycerol, 0.5% BSA and 0.02% New type preservative N.
<b>Purification</b>	Affinity purification

## Immunogen

<b>Gene Name</b>	RPS19BP1
<b>Alternative Names</b>	RPS19BP1; AROS; Active regulator of SIRT1; 40S ribosomal protein S19-binding protein 1; RPS19-binding protein 1; S19BP
<b>Gene ID</b>	91582.0
<b>SwissProt ID</b>	Q86WX3.The antiserum was produced against synthesized peptide derived from human RPS19BP1. AA range:71-120

## Application

<b>Dilution Ratio</b>	IHC 1:100-1:300 ELISA: 1:10000
<b>Molecular Weight</b>	

**Product Name: Ribosomal Protein S19BP Rabbit  
Polyclonal Antibody  
Catalog #: APRab17178**

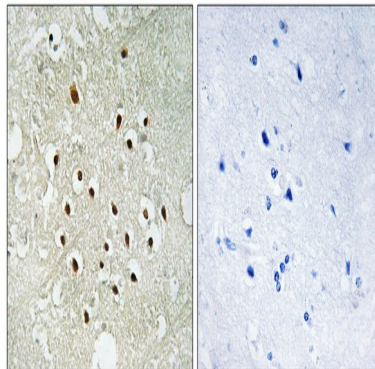
---

## Background

function:Direct regulator of SIRT1. Enhances SIRT1-mediated deacetylation of p53/TP53, thereby participating in inhibition of p53/TP53-mediated transcriptional activity.,similarity:Belongs to the AROS family.,subunit:Interacts with RPS19 (By similarity). Interacts with SIRT1.,tissue specificity:Widely expressed (at protein level),,function:Direct regulator of SIRT1. Enhances SIRT1-mediated deacetylation of p53/TP53, thereby participating in inhibition of p53/TP53-mediated transcriptional activity.,similarity:Belongs to the AROS family.,subunit:Interacts with RPS19 (By similarity). Interacts with SIRT1.,tissue specificity:Widely expressed (at protein level),,

## Research Area

## Image Data



Immunohistochemistry analysis of paraffin-embedded human brain tissue, using RPS19BP1 Antibody. The picture on the right is blocked with the synthesized peptide.

## Note

For research use only.