

Product Name: Ribosomal Protein S12 Rabbit Polyclonal Antibody
Catalog #: APRab17173

Summary

Production Name	Ribosomal Protein S12 Rabbit Polyclonal Antibody
Description	Rabbit Polyclonal Antibody
Host	Rabbit
Application	IF, WB, IHC, ELISA
Reactivity	Human, Mouse, Rat

Performance

Conjugation	Unconjugated
Modification	Unmodified
Isotype	IgG
Clonality	Polyclonal
Form	Liquid
Storage	Store at 4°C short term. Aliquot and store at -20°C long term. Avoid freeze/thaw cycles.
Buffer	Liquid in PBS containing 50% glycerol, 0.5% BSA and 0.02% New type preservative N.
Purification	Affinity purification

Immunogen

Gene Name	RPS12
Alternative Names	RPS12; 40S ribosomal protein S12
Gene ID	6206.0
SwissProt ID	P25398. The antiserum was produced against synthesized peptide derived from human RPS12. AA range:83-132

Application

Dilution Ratio	WB 1:500 - 1:2000. IHC 1:100 - 1:300. IF 1:200 - 1:1000. ELISA: 1:40000. Not yet tested in other applications.
Molecular Weight	15kD

Product Name: Ribosomal Protein S12 Rabbit Polyclonal Antibody
Catalog #: APRab17173

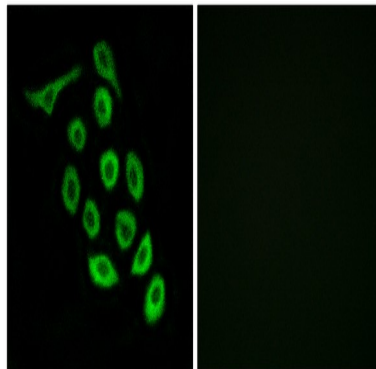
Background

Ribosomes, the organelles that catalyze protein synthesis, consist of a small 40S subunit and a large 60S subunit. Together these subunits are composed of 4 RNA species and approximately 80 structurally distinct proteins. This gene encodes a ribosomal protein that is a component of the 40S subunit. The protein belongs to the S12E family of ribosomal proteins. It is located in the cytoplasm. Increased expression of this gene in colorectal cancers compared to matched normal colonic mucosa has been observed. As is typical for genes encoding ribosomal proteins, there are multiple processed pseudogenes of this gene dispersed through the genome. [provided by RefSeq, Jul 2008],similarity:Belongs to the ribosomal protein S12e family.,

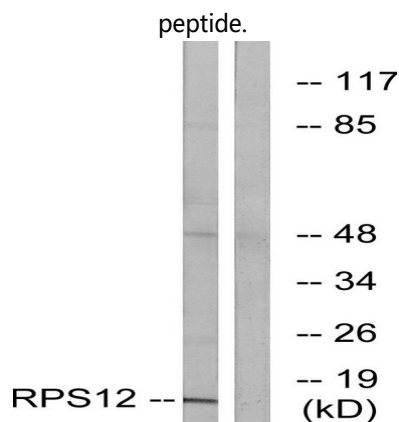
Research Area

Ribosome;

Image Data

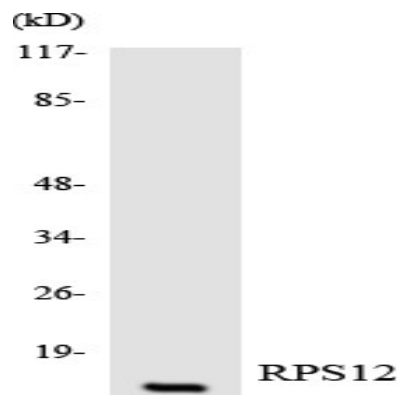


Immunofluorescence analysis of A549 cells, using RPS12 Antibody. The picture on the right is blocked with the synthesized

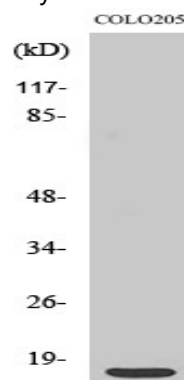


Western blot analysis of lysates from COLO cells, using RPS12 Antibody. The lane on the right is blocked with the synthesized peptide.

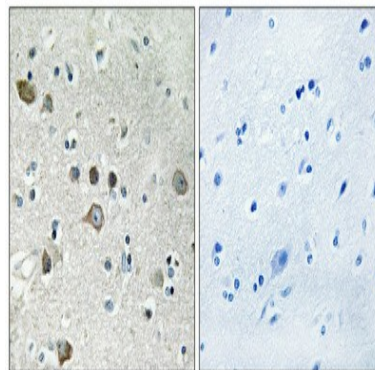
Product Name: Ribosomal Protein S12 Rabbit Polyclonal Antibody
Catalog #: APRab17173



Western blot analysis of the lysates from HUVEC cells using RPS12 antibody.



Western Blot analysis of various cells using Ribosomal Protein S12 Polyclonal Antibody



Immunohistochemical analysis of paraffin-embedded Human brain. Antibody was diluted at 1:100 (4°, overnight) . High-pressure and temperature Tris-EDTA, pH 8.0 was used for antigen retrieval. Negative control (right) obtained from antibody was pre-absorbed by immunogen peptide.

Note

For research use only.