

**Product Name: Ribosomal Protein L39L Rabbit Polyclonal Antibody**  
**Catalog #: APRab17165**

## Summary

<b>Production Name</b>	Ribosomal Protein L39L Rabbit Polyclonal Antibody
<b>Description</b>	Rabbit Polyclonal Antibody
<b>Host</b>	Rabbit
<b>Application</b>	IHC,ELISA
<b>Reactivity</b>	Human,Rat,Mouse

## Performance

<b>Conjugation</b>	Unconjugated
<b>Modification</b>	Unmodified
<b>Isotype</b>	IgG
<b>Clonality</b>	Polyclonal
<b>Form</b>	Liquid
<b>Storage</b>	Store at 4°C short term. Aliquot and store at -20°C long term. Avoid freeze/thaw cycles.
<b>Buffer</b>	Liquid in PBS containing 50% glycerol, 0.5% BSA and 0.02% New type preservative N.
<b>Purification</b>	Affinity purification

## Immunogen

<b>Gene Name</b>	RPL39L
<b>Alternative Names</b>	RPL39L; RPL39L1; 60S ribosomal protein L39-like; 60S ribosomal protein L39-2
<b>Gene ID</b>	116832.0
<b>SwissProt ID</b>	Q96EH5.The antiserum was produced against synthesized peptide derived from human RPL39L. AA range:1-50

## Application

<b>Dilution Ratio</b>	IHC 1:100-1:300 ELISA: 1:40000
<b>Molecular Weight</b>	

## Background

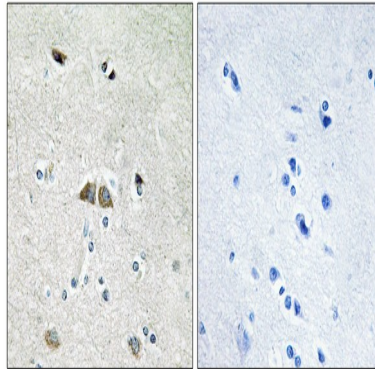
**Product Name: Ribosomal Protein L39L Rabbit  
Polyclonal Antibody  
Catalog #: APRab17165**

---

This gene encodes a protein sharing high sequence similarity with ribosomal protein L39. Although the name of this gene has been referred to as 'ribosomal protein L39' in the public databases, its official name is 'ribosomal protein L39-like'. It is not currently known whether the encoded protein is a functional ribosomal protein or whether it has evolved a function that is independent of the ribosome. [provided by RefSeq, Jul 2008],similarity:Belongs to the ribosomal protein L39e family.,tissue specificity:Testis specific.,

## Research Area

## Image Data



Immunohistochemistry analysis of paraffin-embedded human brain, using RPL39L Antibody. The picture on the right is blocked with the synthesized peptide.

## Note

For research use only.