

**Product Name: Ribosomal Protein L37A Rabbit
Polyclonal Antibody
Catalog #: APRab17163**

Summary

Production Name	Ribosomal Protein L37A Rabbit Polyclonal Antibody
Description	Rabbit Polyclonal Antibody
Host	Rabbit
Application	IHC,ELISA
Reactivity	Human,Mouse,Rat

Performance

Conjugation	Unconjugated
Modification	Unmodified
Isotype	IgG
Clonality	Polyclonal
Form	Liquid
Storage	Store at 4°C short term. Aliquot and store at -20°C long term. Avoid freeze/thaw cycles.
Buffer	Liquid in PBS containing 50% glycerol, 0.5% BSA and 0.02% New type preservative N.
Purification	Affinity purification

Immunogen

Gene Name	RPL37A
Alternative Names	RPL37A; 60S ribosomal protein L37a
Gene ID	6168.0
SwissProt ID	P61513.The antiserum was produced against synthesized peptide derived from human RPL37A. AA range:21-70

Application

Dilution Ratio	IHC 1:100 - 1:300. ELISA: 1:40000..
Molecular Weight	10kD

**Product Name: Ribosomal Protein L37A Rabbit
Polyclonal Antibody
Catalog #: APRab17163**

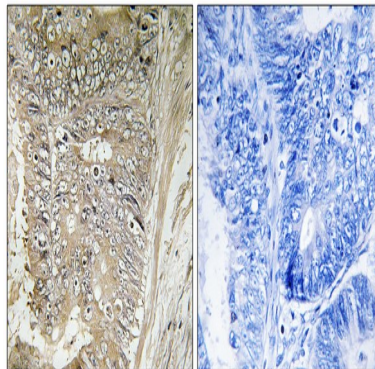
Background

Ribosomes, the organelles that catalyze protein synthesis, consist of a small 40S subunit and a large 60S subunit. Together these subunits are composed of 4 RNA species and approximately 80 structurally distinct proteins. This gene encodes a ribosomal protein that is a component of the 60S subunit. The protein belongs to the L37AE family of ribosomal proteins. It is located in the cytoplasm. The protein contains a C4-type zinc finger-like domain. As is typical for genes encoding ribosomal proteins, there are multiple processed pseudogenes of this gene dispersed through the genome. [provided by RefSeq, Jul 2008],similarity:Belongs to the ribosomal protein L37Ae family.,

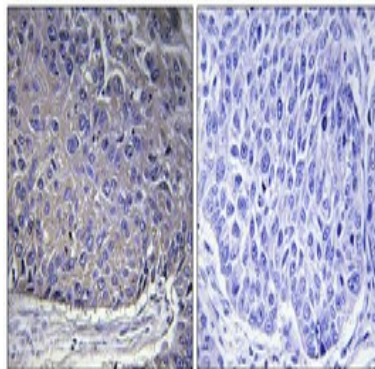
Research Area

Ribosome;

Image Data



Immunohistochemistry analysis of paraffin-embedded human colon carcinoma tissue, using RPL37A Antibody. The picture on the right is blocked with the synthesized peptide.



Immunohistochemical analysis of paraffin-embedded Human lung cancer. Antibody was diluted at 1:100 (4°,overnight) . High-pressure and temperature Tris-EDTA,pH8.0 was used for antigen retrieval. Negetive contrl (right) obtaned from antibody was pre-absorbed by immunogen peptide.

**Product Name: Ribosomal Protein L37A Rabbit
Polyclonal Antibody
Catalog #: APRab17163**



Note

For research use only.