

Product Name: Ribosomal Protein L35 Rabbit Polyclonal Antibody
Catalog #: APRab17160

Summary

Production Name	Ribosomal Protein L35 Rabbit Polyclonal Antibody
Description	Rabbit Polyclonal Antibody
Host	Rabbit
Application	WB,ELISA
Reactivity	Human,Mouse,Rat

Performance

Conjugation	Unconjugated
Modification	Unmodified
Isotype	IgG
Clonality	Polyclonal
Form	Liquid
Storage	Store at 4°C short term. Aliquot and store at -20°C long term. Avoid freeze/thaw cycles.
Buffer	Liquid in PBS containing 50% glycerol, 0.5% BSA and 0.02% New type preservative N.
Purification	Affinity purification

Immunogen

Gene Name	RPL35
Alternative Names	RPL35; 60S ribosomal protein L35
Gene ID	11224.0
SwissProt ID	P42766.The antiserum was produced against synthesized peptide derived from human RPL35. AA range:51-100

Application

Dilution Ratio	WB 1:500 - 1:2000. ELISA: 1:10000..
Molecular Weight	18kD

Product Name: Ribosomal Protein L35 Rabbit Polyclonal Antibody
Catalog #: APRab17160

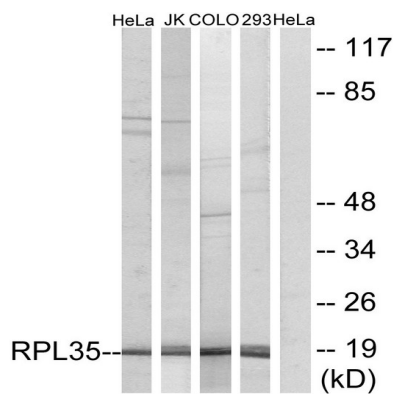
Background

Ribosomes, the organelles that catalyze protein synthesis, consist of a small 40S subunit and a large 60S subunit. Together these subunits are composed of 4 RNA species and approximately 80 structurally distinct proteins. This gene encodes a ribosomal protein that is a component of the 60S subunit. The protein belongs to the L29P family of ribosomal proteins. It is located in the cytoplasm. As is typical for genes encoding ribosomal proteins, there are multiple processed pseudogenes of this gene dispersed through the genome. [provided by RefSeq, Jul 2008],similarity:Belongs to the ribosomal protein L29P family.,

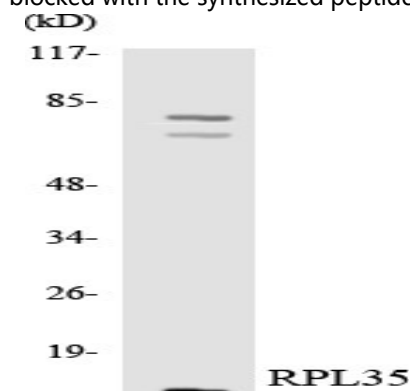
Research Area

Ribosome;

Image Data



Western blot analysis of lysates from 293, HeLa, COLO, and Jurkat cells, using RPL35 Antibody. The lane on the right is blocked with the synthesized peptide.



Western blot analysis of the lysates from HeLa cells using RPL35 antibody.

**Product Name: Ribosomal Protein L35 Rabbit Polyclonal
Antibody**
Catalog #: APRab17160



Western Blot analysis of various cells using Ribosomal Protein L35 Polyclonal Antibody diluted at 1: 2000

Note

For research use only.