

**Product Name: Ribosomal Protein L31 Rabbit Polyclonal Antibody**  
**Catalog #: APRab17158**

---

## Summary

<b>Production Name</b>	Ribosomal Protein L31 Rabbit Polyclonal Antibody
<b>Description</b>	Rabbit Polyclonal Antibody
<b>Host</b>	Rabbit
<b>Application</b>	IHC,ELISA
<b>Reactivity</b>	Human,Mouse,Rat

## Performance

<b>Conjugation</b>	Unconjugated
<b>Modification</b>	Unmodified
<b>Isotype</b>	IgG
<b>Clonality</b>	Polyclonal
<b>Form</b>	Liquid
<b>Storage</b>	Store at 4°C short term. Aliquot and store at -20°C long term. Avoid freeze/thaw cycles.
<b>Buffer</b>	Liquid in PBS containing 50% glycerol, 0.5% BSA and 0.02% New type preservative N.
<b>Purification</b>	Affinity purification

## Immunogen

<b>Gene Name</b>	RPL31
<b>Alternative Names</b>	RPL31; 60S ribosomal protein L31
<b>Gene ID</b>	6160.0
<b>SwissProt ID</b>	P62899.The antiserum was produced against synthesized peptide derived from human RPL31. AA range:61-110

## Application

<b>Dilution Ratio</b>	IHC 1:100-1:300 ELISA: 1:40000
<b>Molecular Weight</b>	

## Background

---

**Product Name: Ribosomal Protein L31 Rabbit Polyclonal Antibody**  
**Catalog #: APRab17158**

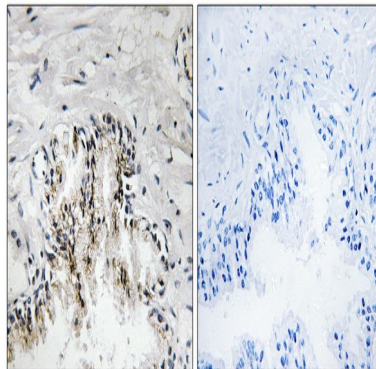
---

Ribosomes, the organelles that catalyze protein synthesis, consist of a small 40S subunit and a large 60S subunit. Together these subunits are composed of 4 RNA species and approximately 80 structurally distinct proteins. This gene encodes a ribosomal protein that is a component of the 60S subunit. The protein belongs to the L31E family of ribosomal proteins. It is located in the cytoplasm. Higher levels of expression of this gene in familial adenomatous polyposis compared to matched normal tissues have been observed. As is typical for genes encoding ribosomal proteins, there are multiple processed pseudogenes of this gene dispersed through the genome. Alternatively spliced transcript variants encoding distinct isoforms have been found for this gene. [provided by RefSeq, Jul 2008],similarity:Belongs to the ribosomal protein L31e family.,

### **Research Area**

Ribosome;

### **Image Data**



Immunohistochemistry analysis of paraffin-embedded human prostate carcinoma tissue, using RPL31 Antibody. The picture on the right is blocked with the synthesized peptide.

### **Note**

For research use only.