

**Product Name: Ribosomal Protein L27A Rabbit
Polyclonal Antibody
Catalog #: APRab17154**

Summary

Production Name	Ribosomal Protein L27A Rabbit Polyclonal Antibody
Description	Rabbit Polyclonal Antibody
Host	Rabbit
Application	IF, WB, IHC
Reactivity	Human, Mouse, Rat

Performance

Conjugation	Unconjugated
Modification	Unmodified
Isotype	IgG
Clonality	Polyclonal
Form	Liquid
Storage	Store at 4°C short term. Aliquot and store at -20°C long term. Avoid freeze/thaw cycles.
Buffer	Liquid in PBS containing 50% glycerol, 0.5% BSA and 0.02% New type preservative N.
Purification	Affinity purification

Immunogen

Gene Name	RPL27A
Alternative Names	RPL27A; 60S ribosomal protein L27a
Gene ID	6157.0
SwissProt ID	P46776. The antiserum was produced against synthesized peptide derived from human RPL27A. AA range:99-148

Application

Dilution Ratio	WB 1:500 - 1:2000. IHC 1:100 - 1:300. IF 1:200 - 1:1000. ELISA: 1:40000. Not yet tested in other applications.
Molecular Weight	20kD

**Product Name: Ribosomal Protein L27A Rabbit
Polyclonal Antibody
Catalog #: APRab17154**

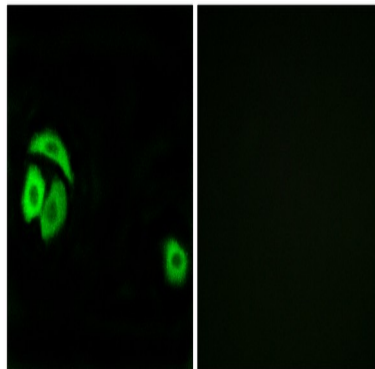
Background

Ribosomes, the organelles that catalyze protein synthesis, consist of a small 40S subunit and a large 60S subunit. Together these subunits are composed of 4 RNA species and approximately 80 structurally distinct proteins. This gene encodes a ribosomal protein that is a component of the 60S subunit. The protein belongs to the L15P family of ribosomal proteins. It is located in the cytoplasm. Variable expression of this gene in colorectal cancers compared to adjacent normal tissues has been observed, although no correlation between the level of expression and the severity of the disease has been found. As is typical for genes encoding ribosomal proteins, multiple processed pseudogenes derived from this gene are dispersed through the genome. [provided by RefSeq, Jul 2008],similarity:Belongs to the ribosomal protein L15P family.,

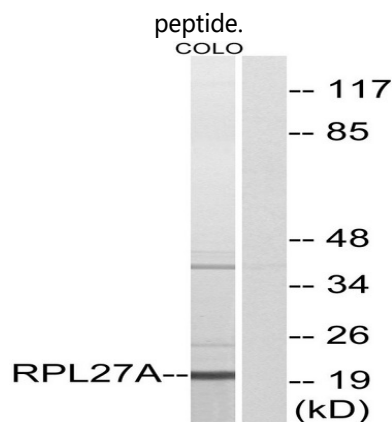
Research Area

Ribosome;

Image Data

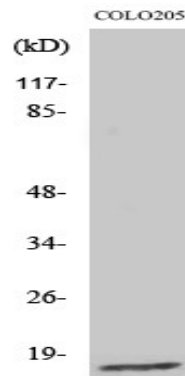


Immunofluorescence analysis of A549 cells, using RPL27A Antibody. The picture on the right is blocked with the synthesized

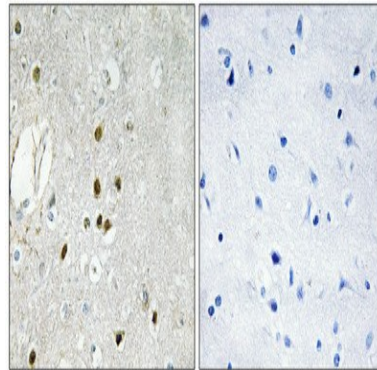


Western blot analysis of lysates from COLO cells, using RPL27A Antibody. The lane on the right is blocked with the synthesized peptide.

**Product Name: Ribosomal Protein L27A Rabbit
Polyclonal Antibody
Catalog #: APRab17154**



Western Blot analysis of various cells using Ribosomal Protein L27A Polyclonal Antibody diluted at 1: 2000



Immunohistochemical analysis of paraffin-embedded Human brain. Antibody was diluted at 1:100 (4°, overnight) . High-pressure and temperature Tris-EDTA, pH 8.0 was used for antigen retrieval. Negative control (right) obtained from antibody was pre-absorbed by immunogen peptide.

Note

For research use only.