

Product Name: Ribosomal Protein L26L Rabbit Polyclonal Antibody
Catalog #: APRab17153

Summary

| | |
|------------------------|---|
| Production Name | Ribosomal Protein L26L Rabbit Polyclonal Antibody |
| Description | Rabbit Polyclonal Antibody |
| Host | Rabbit |
| Application | WB,IHC,ELISA |
| Reactivity | Human,Mouse,Rat |

Performance

| | |
|---------------------|--|
| Conjugation | Unconjugated |
| Modification | Unmodified |
| Isotype | IgG |
| Clonality | Polyclonal |
| Form | Liquid |
| Storage | Store at 4°C short term. Aliquot and store at -20°C long term. Avoid freeze/thaw cycles. |
| Buffer | Liquid in PBS containing 50% glycerol, 0.5% BSA and 0.02% New type preservative N. |
| Purification | Affinity purification |

Immunogen

| | |
|--------------------------|--|
| Gene Name | RPL26L1 |
| Alternative Names | RPL26L1; RPL26P1; 60S ribosomal protein L26-like 1 |
| Gene ID | 51121.0 |
| SwissProt ID | Q9UNX3.The antiserum was produced against synthesized peptide derived from human RPL26L. AA range:96-145 |

Application

| | |
|-------------------------|--|
| Dilution Ratio | WB 1:500 - 1:2000. IHC 1:100 - 1:300. ELISA: 1:40000.. |
| Molecular Weight | 20kD |

Product Name: Ribosomal Protein L26L Rabbit Polyclonal Antibody
Catalog #: APRab17153

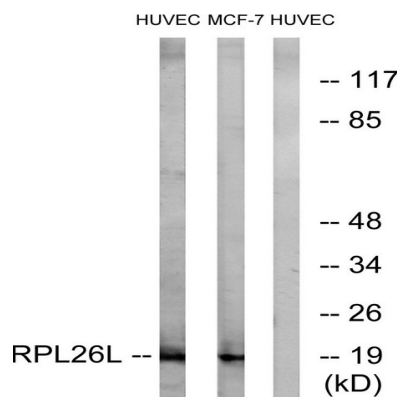
Background

This gene encodes a protein that shares high sequence similarity with ribosomal protein L26. Alternative splicing results in multiple transcript variants encoding the same protein. [provided by RefSeq, Dec 2015],similarity:Belongs to the ribosomal protein L24P family.,

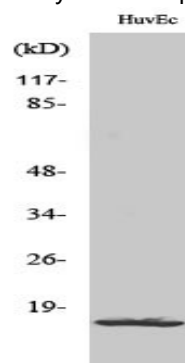
Research Area

Ribosome;

Image Data

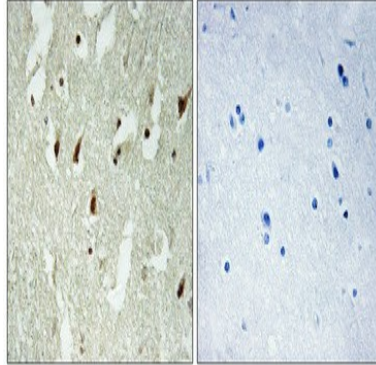


Western blot analysis of lysates from HUVEC and MCF-7 cells, using RPL26L Antibody. The lane on the right is blocked with the synthesized peptide.



Western Blot analysis of various cells using Ribosomal Protein L26L Polyclonal Antibody diluted at 1 : 2000

**Product Name: Ribosomal Protein L26L Rabbit
Polyclonal Antibody
Catalog #: APRab17153**



Immunohistochemical analysis of paraffin-embedded Human brain. Antibody was diluted at 1:100 (4°,overnight) . High-pressure and temperature Tris-EDTA,pH8.0 was used for antigen retrieval. Negative contrl (right) obtained from antibody was pre-absorbed by immunogen peptide.

Note

For research use only.