

**Product Name: Ribosomal Protein L18 Rabbit Polyclonal Antibody**  
**Catalog #: APRab17150**

---

## Summary

<b>Production Name</b>	Ribosomal Protein L18 Rabbit Polyclonal Antibody
<b>Description</b>	Rabbit Polyclonal Antibody
<b>Host</b>	Rabbit
<b>Application</b>	WB,ELISA
<b>Reactivity</b>	Human,Mouse,Rat

## Performance

<b>Conjugation</b>	Unconjugated
<b>Modification</b>	Unmodified
<b>Isotype</b>	IgG
<b>Clonality</b>	Polyclonal
<b>Form</b>	Liquid
<b>Storage</b>	Store at 4°C short term. Aliquot and store at -20°C long term. Avoid freeze/thaw cycles.
<b>Buffer</b>	Liquid in PBS containing 50% glycerol, 0.5% BSA and 0.02% New type preservative N.
<b>Purification</b>	Affinity purification

## Immunogen

<b>Gene Name</b>	RPL18
<b>Alternative Names</b>	RPL18; 60S ribosomal protein L18
<b>Gene ID</b>	6141.0
<b>SwissProt ID</b>	Q07020.The antiserum was produced against synthesized peptide derived from human RPL18. AA range:111-160

## Application

<b>Dilution Ratio</b>	WB 1:500 - 1:2000. ELISA: 1:40000..
<b>Molecular Weight</b>	23kD

**Product Name: Ribosomal Protein L18 Rabbit Polyclonal Antibody**  
**Catalog #: APRab17150**



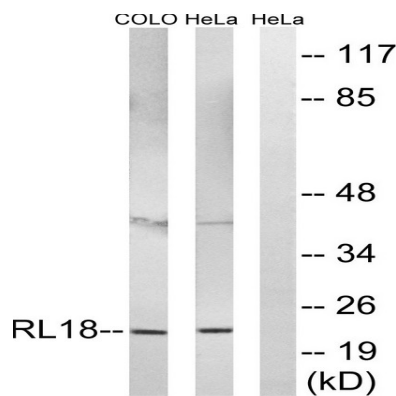
## Background

Ribosomes, the organelles that catalyze protein synthesis, consist of a small 40S subunit and a large 60S subunit. Together these subunits are composed of 4 RNA species and approximately 80 structurally distinct proteins. This gene encodes a member of the L18E family of ribosomal proteins that is a component of the 60S subunit. As is typical for genes encoding ribosomal proteins, there are multiple processed pseudogenes of this gene dispersed through the genome. Alternatively spliced transcript variants encoding multiple isoforms have been observed for this gene. [provided by RefSeq, Jul 2012],similarity:Belongs to the ribosomal protein L18e family.,

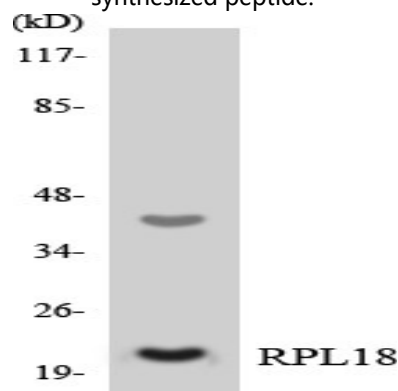
## Research Area

Ribosome;

## Image Data



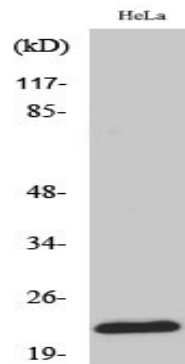
Western blot analysis of lysates from HeLa and COLO cells, using RPL18 Antibody. The lane on the right is blocked with the synthesized peptide.



Western blot analysis of the lysates from HeLa cells using RPL18 antibody.

**Product Name: Ribosomal Protein L18 Rabbit Polyclonal  
Antibody**  
**Catalog #: APRab17150**

---



Western Blot analysis of various cells using Ribosomal Protein L18 Polyclonal Antibody diluted at 1: 2000

**Note**

For research use only.