

Summary

Production Name	Rhotekin Rabbit Polyclonal Antibody
Description	Rabbit Polyclonal Antibody
Host	Rabbit
Application	IHC,ELISA
Reactivity	Human,Mouse,Rat

Performance

Conjugation	Unconjugated
Modification	Unmodified
Isotype	IgG
Clonality	Polyclonal
Form	Liquid
Storage	Store at 4°C short term. Aliquot and store at -20°C long term. Avoid freeze/thaw cycles.
Buffer	Liquid in PBS containing 50% glycerol, 0.5% BSA and 0.02% New type preservative N.
Purification	Affinity purification

Immunogen

Gene Name	RTKN
Alternative Names	RTKN; RTKN1; Rhotekin
Gene ID	6242.0
SwissProt ID	Q9BST9.Synthesized peptide derived from Rhotekin . at AA range: 80-160

Application

Dilution Ratio IHC 1:100-1:300 ELISA: 1:20000

Molecular Weight

Background

This gene encodes a scaffold protein that interacts with GTP-bound Rho proteins. Binding of this protein inhibits the GTPase activity of Rho proteins. This protein may interfere with the conversion of active, GTP-bound Rho to the inactive

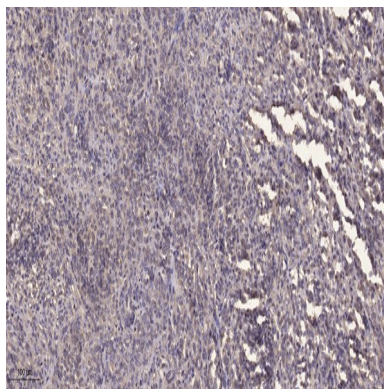
Product Name: Rhotekin Rabbit Polyclonal Antibody
Catalog #: APRab17137



GDP-bound form by RhoGAP. Rho proteins regulate many important cellular processes, including cytokinesis, transcription, smooth muscle contraction, cell growth and transformation. Dysregulation of the Rho signal transduction pathway has been implicated in many forms of cancer. Alternative splicing results in multiple transcript variants encoding different isoforms. [provided by RefSeq, Jul 2008],caution:The sequence shown here is derived from an Ensembl automatic analysis pipeline and should be considered as preliminary data.,function:Mediates Rho signaling to activate NF-kappa-B and may confer increased resistance to apoptosis to cells in gastric tumorigenesis. May play a novel role in the organization of septin structures.,similarity:Contains 1 PH domain.,similarity:Contains 1 REM (Hr1) repeat.,subunit:Interacts via its C-terminal region with the TAX1BP3 PDZ domain. This interaction facilitates Rho-mediated activation of the c-Fos serum response element (SRE). Interacts with SEPT9. Specifically binds to GTP-bound RHOA, RHOB and RHOC and inhibits their GTPase activity.,tissue specificity:Highly expressed in prostate, moderately in kidney, heart, brain, spleen, testis, placenta, small intestine, pancreas, skeletal muscle and peripheral blood leukocytes, and weakly in ovary, colon and thymus. Weakly expressed in all normal cell lines tested. Overexpressed in various cancer cell lines.,

Research Area

Image Data



Immunohistochemical analysis of paraffin-embedded human Colon cancer. 1, Antibody was diluted at 1:200 (4° overnight) .
2, Tris-EDTA,pH9.0 was used for antigen retrieval. 3,Secondary antibody was diluted at 1:200 (room temperature, 45min) .

Note

For research use only.