

Summary

Production Name	RHOBTB3 Rabbit Polyclonal Antibody
Description	Rabbit Polyclonal Antibody
Host	Rabbit
Application	IHC, WB, ELISA
Reactivity	Human, Mouse

Performance

Conjugation	Unconjugated
Modification	Unmodified
Isotype	IgG
Clonality	Polyclonal
Form	Liquid
Storage	Store at 4°C short term. Aliquot and store at -20°C long term. Avoid freeze/thaw cycles.
Buffer	Liquid in PBS containing 50% glycerol, 0.5% BSA and 0.02% New type preservative N.
Purification	Affinity purification

Immunogen

Gene Name	RHOBTB3
Alternative Names	RHOBTB3; KIAA0878; Rho-related BTB domain-containing protein 3
Gene ID	22836.0
SwissProt ID	O94955. The antiserum was produced against synthesized peptide derived from human RHOBTB3. AA range: 335-384

Application

Dilution Ratio	WB 1:500 - 1:2000. IHC-p: 1:50-300 ELISA: 1:20000..
Molecular Weight	70kD

Background

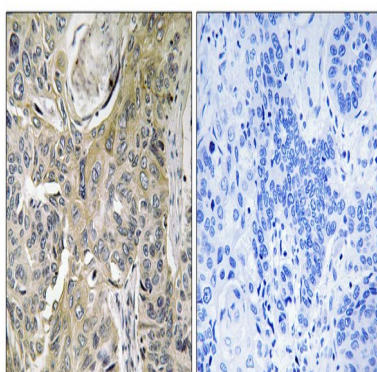
Product Name: RHOBTB3 Rabbit Polyclonal Antibody
Catalog #: APRab17128



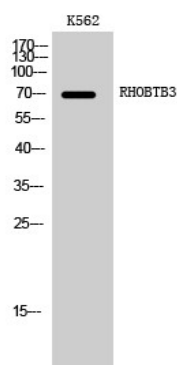
RHOBTB3 is a member of the evolutionarily conserved RHOBTB subfamily of Rho GTPases. For background information on RHOBTBs, see RHOBTB1 (MIM 607351).[supplied by OMIM, Apr 2004],similarity:Contains 2 BTB (POZ) domains.,tissue specificity:Ubiquitous. Highly expressed in neural and cardiac tissues, pancreas, placenta and testis.,

Research Area

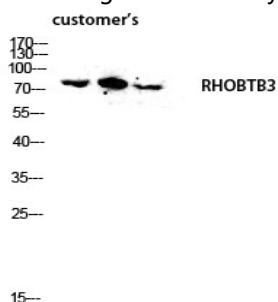
Image Data



Immunohistochemistry analysis of paraffin-embedded human lung carcinoma tissue, using RHOBTB3 Antibody. The picture on the right is blocked with the synthesized peptide.



Western Blot analysis of K562 cells using RHOBTB3 Polyclonal Antibody diluted at 1: 2000



Product Name: RHOBTB3 Rabbit Polyclonal Antibody
Catalog #: APRab17128



Western blot analysis of customer 's lysis using RHOBTB3 antibody. Antibody was diluted at 1:2000

Note

For research use only.