

Summary

Production Name	RhoBTB1/2 Rabbit Polyclonal Antibody
Description	Rabbit Polyclonal Antibody
Host	Rabbit
Application	WB,ELISA
Reactivity	Human,Mouse

Performance

Conjugation	Unconjugated
Modification	Unmodified
Isotype	IgG
Clonality	Polyclonal
Form	Liquid
Storage	Store at 4°C short term. Aliquot and store at -20°C long term. Avoid freeze/thaw cycles.
Buffer	Liquid in PBS containing 50% glycerol, 0.5% BSA and 0.02% New type preservative N.
Purification	Affinity purification

Immunogen

Gene Name	RHOBTB1/RHOBTB2 RHOBTB1; KIAA0740; Rho-related BTB domain-containing protein 1; RHOBTB2; DBC2;
Alternative Names	KIAA0717; Rho-related BTB domain-containing protein 2; Deleted in breast cancer 2 gene protein; p83
Gene ID	23221/9886
SwissProt ID	O94844/Q9BYZ6.The antiserum was produced against synthesized peptide derived from human RHBT2. AA range:61-110

Application

Dilution Ratio	WB 1:500 - 1:2000. ELISA: 1:5000
Molecular Weight	83kD

Product Name: RhoBTB1/2 Rabbit Polyclonal Antibody
Catalog #: APRab17127

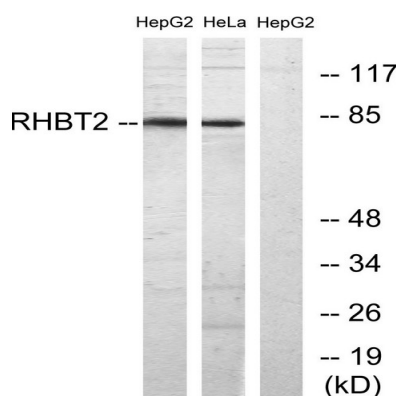


Background

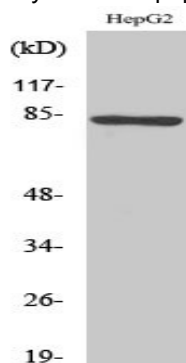
The protein encoded by this gene belongs to the Rho family of the small GTPase superfamily. It contains a GTPase domain, a proline-rich region, a tandem of 2 BTB (broad complex, tramtrack, and bric-a-brac) domains, and a conserved C-terminal region. The protein plays a role in small GTPase-mediated signal transduction and the organization of the actin filament system. Alternate splicing results in multiple transcript variants. [provided by RefSeq, Dec 2008],similarity:Belongs to the small GTPase superfamily. Rho family.,similarity:Contains 2 BTB (POZ) domains.,tissue specificity:Ubiquitous, with highest levels in skeletal muscle, placenta, testis, stomach, and kidney, followed by uterus and adrenal gland. Expressed in a variety of fetal tissues.,

Research Area

Image Data



Western blot analysis of lysates from HepG2 and HeLa cells, using RHBT2 Antibody. The lane on the right is blocked with the synthesized peptide.



Western Blot analysis of various cells using RhoBTB1/2 Polyclonal Antibody

Product Name: RhoBTB1/2 Rabbit Polyclonal Antibody
Catalog #: APRab17127



Note

For research use only.