

**Product Name: Rho H Rabbit Polyclonal Antibody**  
**Catalog #: APRab17126**



## Summary

<b>Production Name</b>	Rho H Rabbit Polyclonal Antibody
<b>Description</b>	Rabbit Polyclonal Antibody
<b>Host</b>	Rabbit
<b>Application</b>	IF, WB, ELISA
<b>Reactivity</b>	Human, Mouse, Rat

## Performance

<b>Conjugation</b>	Unconjugated
<b>Modification</b>	Unmodified
<b>Isotype</b>	IgG
<b>Clonality</b>	Polyclonal
<b>Form</b>	Liquid
<b>Storage</b>	Store at 4°C short term. Aliquot and store at -20°C long term. Avoid freeze/thaw cycles.
<b>Buffer</b>	Liquid in PBS containing 50% glycerol, 0.5% BSA and 0.02% New type preservative N.
<b>Purification</b>	Affinity purification

## Immunogen

<b>Gene Name</b>	RhoH
<b>Alternative Names</b>	RHOH; ARHH; TTF; Rho-related GTP-binding protein RhoH; GTP-binding protein TTF; Translocation three four protein
<b>Gene ID</b>	399.0
<b>SwissProt ID</b>	Q15669. The antiserum was produced against synthesized peptide derived from human RhoH. AA range:141-190

## Application

<b>Dilution Ratio</b>	WB 1:500 - 1:2000. IF 1:200 - 1:1000. ELISA: 1:20000. Not yet tested in other applications.
<b>Molecular Weight</b>	21kD

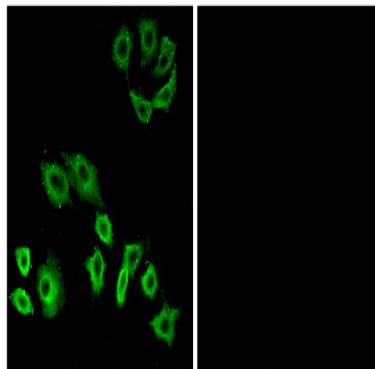
## Background

The protein encoded by this gene is a member of the Ras superfamily of guanosine triphosphate (GTP)-metabolizing enzymes. The encoded protein is expressed in hematopoietic cells, where it functions as a negative regulator of cell growth and survival. This gene may be hypermutated or misexpressed in leukemias and lymphomas. Chromosomal translocations in non-Hodgkin's lymphoma occur between this locus and B-cell CLL/lymphoma 6 (BCL6) on chromosome 3, leading to the production of fusion transcripts. Alternative splicing in the 5' untranslated region results in multiple transcript variants that encode the same protein. [provided by RefSeq, May 2013],disease:A chromosomal aberration involving RHOH is found in a non-Hodgkin lymphoma cell line. Translocation t(3;4)(q27;p11) with BCL6.,similarity:Belongs to the small GTPase superfamily. Rho family.,tissue specificity:Transcribed only in hemopoietic cells.,

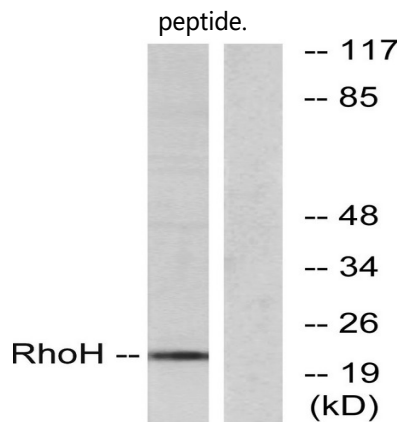
## Research Area

Leukocyte transendothelial migration;

## Image Data

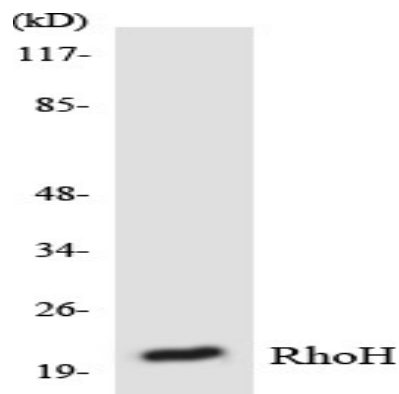


Immunofluorescence analysis of A549 cells, using RhoH Antibody. The picture on the right is blocked with the synthesized



Western blot analysis of lysates from HT-29 cells, using RhoH Antibody. The lane on the right is blocked with the synthesized peptide.

**Product Name: Rho H Rabbit Polyclonal Antibody**  
**Catalog #: APRab17126**



Western blot analysis of the lysates from RAW264.7 cells using RhoH antibody.

**Note**

For research use only.