

Summary

Production Name	Rho GDly Rabbit Polyclonal Antibody
Description	Rabbit Polyclonal Antibody
Host	Rabbit
Application	WB
Reactivity	Human,Rat,Mouse

Performance

Conjugation	Unconjugated
Modification	Unmodified
Isotype	IgG
Clonality	Polyclonal
Form	Liquid
Storage	Store at 4°C short term. Aliquot and store at -20°C long term. Avoid freeze/thaw cycles.
Buffer	Liquid in PBS containing 50% glycerol, 0.5% BSA and 0.02% New type preservative N.
Purification	Affinity purification

Immunogen

Gene Name	ARHGDIG
Alternative Names	ARHGDIG; Rho GDP-dissociation inhibitor 3; Rho GDI 3; Rho-GDI gamma
Gene ID	398.0
SwissProt ID	Q99819.Synthesized peptide derived from Rho GDly . at AA range: 110-190

Application

Dilution Ratio	WB 1:500-2000; ELISA 2000-20000
Molecular Weight	25kD

Background

The GDP-dissociation inhibitors (GDIs) play a primary role in modulating the activation of GTPases by inhibiting the exchange of GDP for GTP. See ARHGDIB (MIM 602843).[supplied by OMIM, Nov 2010],function:Inhibits GDP/GTP exchange

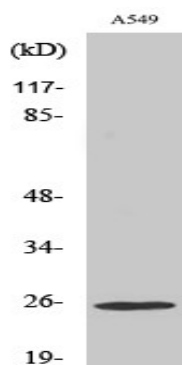
Product Name: Rho GDly Rabbit Polyclonal Antibody
Catalog #: APRab17125



reaction of RhoB. Interacts specifically with the GDP- and GTP-bound forms of post-translationally processed Rhob and Rhog proteins, both of which show a growth-regulated expression in mammalian cells. Stimulates the release of the GDP-bound but not the GTP-bound RhoB protein. Also inhibits the GDP/GTP exchange of RhoB but shows less ability to inhibit the dissociation of prebound GTP.,similarity:Belongs to the Rho GDI family.,tissue specificity:Primarily expressed in pancreas and brain.,

Research Area

Image Data



Western Blot analysis of various cells using Rho GDly Polyclonal Antibody

Note

For research use only.