

Summary

Production Name	Rho GDI α Rabbit Polyclonal Antibody
Description	Rabbit Polyclonal Antibody
Host	Rabbit
Application	IHC,ELISA
Reactivity	Human,Mouse,Rat

Performance

Conjugation	Unconjugated
Modification	Unmodified
Isotype	IgG
Clonality	Polyclonal
Form	Liquid
Storage	Store at 4°C short term. Aliquot and store at -20°C long term. Avoid freeze/thaw cycles.
Buffer	Liquid in PBS containing 50% glycerol, 0.5% BSA and 0.02% New type preservative N.
Purification	Affinity purification

Immunogen

Gene Name	ARHGDIA
Alternative Names	ARHGDIA; GDIA1; Rho GDP-dissociation inhibitor 1; Rho GDI 1; Rho-GDI alpha
Gene ID	396.0
SwissProt ID	P52565.The antiserum was produced against synthesized peptide derived from human ARHGDIA. AA range:140-189

Application

Dilution Ratio	IHC 1:100-1:300 ELISA: 1:10000
Molecular Weight	

Background

This gene encodes a protein that plays a key role in the regulation of signaling through Rho GTPases. The encoded protein

Product Name: Rho GDI α Rabbit Polyclonal Antibody
Catalog #: APRab17124

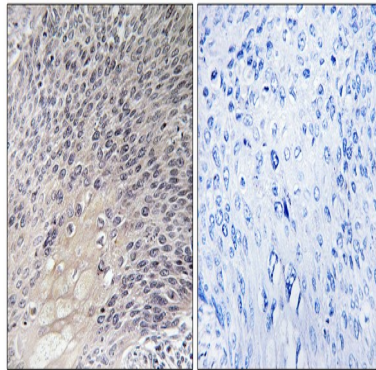


inhibits the disassociation of Rho family members from GDP (guanine diphosphate), thereby maintaining these factors in an inactive state. Activity of this protein is important in a variety of cellular processes, and expression of this gene may be altered in tumors. Mutations in this gene have been found in individuals with nephrotic syndrome, type 8. Alternate splicing results in multiple transcript variants. [provided by RefSeq, Jul 2014],function:Regulates the GDP/GTP exchange reaction of the Rho proteins by inhibiting the dissociation of GDP from them, and the subsequent binding of GTP to them.,similarity:Belongs to the Rho GDI family.,subunit:Monomer.,

Research Area

Neurotrophin;

Image Data



Immunohistochemistry analysis of paraffin-embedded human cervix carcinoma tissue, using ARHGDI α Antibody. The picture on the right is blocked with the synthesized peptide.

Note

For research use only.